

#NotebookMusical



The Notebook

A NEW MUSICAL

chicago
shakespeare theater
on navy pier

EVENT CATERING REIMAGINED.

Full Service, Drop Off, and Office Meal Solutions



Contents



Chicago Shakespeare Theater
800 E. Grand on Navy Pier
Chicago, Illinois 60611

312.595.5600
www.chicagoshakes.com

©2022
Chicago Shakespeare Theater
All rights reserved.

ARTISTIC DIRECTOR
CARL AND MARILYNN THOMA CHAIR
Barbara Gaines

EXECUTIVE DIRECTOR
Criss Henderson

PICTURED ABOVE
Katie Spelman,
Michael Greif, Schele Williams,
Bekah Brunstetter, and
Ingrid Michaelson

PHOTO BY
joe mazza – bravelux

About Chicago Shakespeare 5

Cast 11

Profiles 13



"O earth, I will
befriend thee."
—W.S.

OFFSHORE

Sable
AT NAVY PIER
CURIO COLLECTION
by Hilton™

LÍRICA



EAT. DRINK. STAY.

Experience Chicago's most iconic destination like never before with **Sable**, the first and only hotel on Navy Pier.

Enjoy floor-to-ceiling Lake Michigan views and make waves during your visit at **Offshore**, the world's largest rooftop bar, or **Lirica Restaurant**, featuring Latin and Iberian-inspired cuisine.

WWW.SABLEHOTEL.COM

About CST

A Regional Tony Award recipient, Chicago Shakespeare Theater produces a bold and innovative year-round season—plays, musicals, world premieres, family productions, and theatrical presentations from around the globe—alongside education programming for students, teachers, and lifelong learners, and engagement with communities and artists across the city.

Founded in 1986, the Theater has evolved and expanded to present as many as twenty productions and 650 performances annually, and has been honored with numerous national and international awards. Chicago Shakespeare is the city's leading presenter of international work and has toured its own productions to five continents. The Theater is dedicated to welcoming the next generation of theatergoers; one in four of its audience members is under the age of eighteen.

Recognized as a national leader in arts education, the Theater's arts-in-literacy programs support work in classrooms across the region by bringing words to life onstage for tens of thousands of students each year and through a variety of professional learning opportunities for teachers. Its free citywide Chicago Shakespeare in the Parks program has fostered creative community engagement for more than a decade.

As a nonprofit organization, Chicago Shakespeare works to embrace diversity in all its forms, prioritize inclusion, provide equitable opportunities for growth and success, and offer an accessible experience for all. The Theater strives to engage today's artists and audiences in active and critical conversations with the work of its namesake playwright.

Located on Chicago's iconic Navy Pier, Chicago Shakespeare's campus features the Jentes Family Courtyard Theater, The Yard at Chicago Shakespeare, and the Thoma Theater Upstairs. Onstage, in classrooms and neighborhoods across the city, and in venues around the world, Chicago Shakespeare is a multifaceted cultural hub—inviting audiences, artists, and community members to share powerful stories that connect and inspire. ■

BOARD OF DIRECTORS

Mark S. Ouweleen*
Chair

Clive Christison*
Treasurer

Brayton B. Alley
Frank D. Ballantine
Stephen A. Brodsky
Binta Niambi Brown*
Thomas L. Brown
Allan E. Bulley III
Patrick R. Daley
Brian W. Duwe
Philip L. Engel*
Barbara Gaines*
C. Gary Gerst**
M. Hill Hammock**
Tim Hannahs
Kathryn J. Hayley
Criss Henderson*

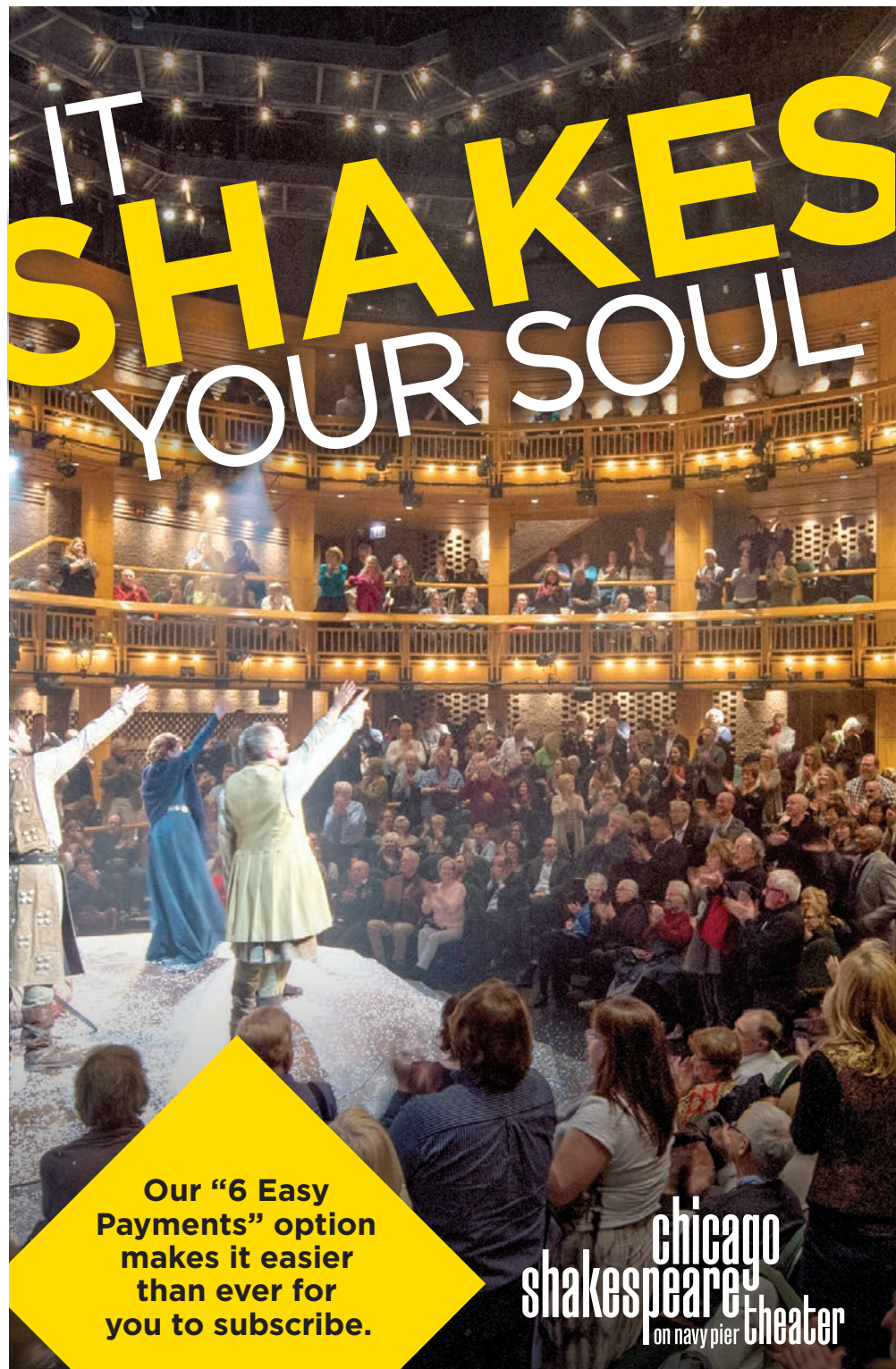
Stewart S. Hudnut
William R. Jentes*
John P. Keller*
Richard A. Kent
Chase Collins Levey
Judy Loseff
Renetta McCann*
Raymond F. McCaskey**
Jess E. Merten
Linda Myers*
Christopher O'Brien
Dennis Olis*
Matthew O'Meara
Paulita A. Pike*
Richard W. Porter*
John Rau
Nazneen Razi*
Neal J. Reenan
Lance Richards

Sheli Z. Rosenberg**
Robert Ryan
Carole Segal
Richard L. Sevcik
Steven J. Solomon**
Harvey J. Struthers, Jr.
Sheila G. Talton
Marilynn J. Thoma*
Gayle R. Tilles
William J. Tomazin, Jr.
Donna Van Eekeren
Priscilla A. (Pam) Walter**
Ray Whitacre*
Elizabeth Yntema

In Memoriam
Richard J. Franke

* Denotes Executive
Committee Members

■ Denotes former Board Chairs



IT SHAKES YOUR SOUL

Our "6 Easy Payments" option makes it easier than ever for you to subscribe.

chicago
shakespeare theater
on navy pier

SUBSCRIBE TODAY
World-class theater. First-class service.
Ultimate flexibility. All for as low as \$47 a play.

<p>WORLD PREMIERE MUSICAL</p> <h2>The Notebook</h2> <p>A NEW MUSICAL</p> <p>LIMITED ENGAGEMENT</p>	
<p>SHAKESPEARE SET IN CUBA</p> <h2>MEASURE FOR MEASURE</h2> <p>OCTOBER 21–NOVEMBER 27</p>	<p>DIRECT FROM LONDON</p> <p>WISE CHILDREN'S</p> <h2>WUTHERING HEIGHTS</h2> <p>JANUARY 27–FEBRUARY 19</p>
<p>BARBARA GAINES' FINAL PRODUCTION AS ARTISTIC DIRECTOR</p> <h2>the COMEDY of ERRORS</h2> <p>MARCH 10–APRIL 16</p>	<p>Plus, one more exciting production to be announced</p> <p>SPRING 2023</p>

312.595.5600 • CHICAGOSHAKES.COM

All of us at Chicago Shakespeare extend our warmest welcome to you—whether this is your first time with us, or perhaps the first time in a long while.

At its core, our work is about people. Connecting audiences and artists. Partnering with teachers and students. Joining with friends and neighbors in shared spaces across the city. It is in this spirit that we work to become an increasingly diverse, equitable, inclusive, and accessible organization.

We strive always to make this a space of respect and acceptance—where every individual, with their unique identities and experiences, is valued and included.

You can learn more about our ongoing institutional commitment to address structural inequities in our community at chicagoshakes.com/IDEAtoAction. And we invite you to let our team know if there is anything we can do for you to make your visit today more enjoyable.



BARBARA GAINES
Artistic Director
Carl and Marilyn Thoma Chair

CRISS HENDERSON
Executive Director

RICK BOYNTON
Creative Producer

KARA RIOPELLE
Managing Director

By Special Arrangement with **KEVIN MCCOLLUM** and **KURT DEUTSCH**

Presents the World Premiere of

THE NOTEBOOK

A NEW MUSICAL

music and lyrics by **INGRID MICHAELSON** book by **BEKAH BRUNSTETTER**
based on the novel by **NICHOLAS SPARKS**

Scenic Design
DAVID ZINN
BRETT BANAKIS

Costume Design
PALOMA YOUNG

Lighting Design
BEN STANTON

Sound Design
NEVIN STEINBERG

Hair & Wig Design
MIA NEAL

Casting
THE TELSEY OFFICE
PATRICK GOODWIN, CSA

Chicago Casting
BOB MASON

Production
Stage Manager
VICTORIA NAVARRO

Orchestrations
JOHN CLANCY
CARMEL DEAN

Co-Vocal Arrangements
INGRID MICHAELSON
CARMEL DEAN

Music Direction
GEOFFREY KO

Music Supervision & Arrangements
CARMEL DEAN

Choreographer
KATIE SPELMAN

directed by **MICHAEL GREIF & SCHELE WILLIAMS**

LEAD PRODUCTION SPONSORS

The Kenneth C. Griffin
Charitable Fund

**BULLEY &
ANDREWS**



SUPPORTING SPONSORS

Additional support provided by the
Ruth D. and Ken M. Davee New Works and Education Outreach Fund.
Production elements supported by the **Anstiss and Ronald Krueck Stage Design Fund**

Welcome. If we can help accommodate you during your visit, please speak with our House Manager. Please note that haze will be used during this performance. For your safety, we ask that you keep aisles and doorways clear. We request that you refrain from taking any photography and other video or audio recordings of the production.

There will be one 15-minute intermission.

SALUTE TO SPONSORS

Chicago Shakespeare Theater is proud to recognize the partnership of our leading contributors, whose visionary support ensures that Shakespeare lives in Chicago today and for generations to come.

MAJOR SEASON SUPPORTERS

BMO  Harris Bank

Rita and
John Canning

The Kenneth C. Griffin
Charitable Fund

The Jentes Family

Lindy and
Mike Keiser

Ray and
Judy McCaskey

ROBERT R.
MCCORMICK
FOUNDATION

Peter and
Alicia Pond

Burton X. and
Sheli Z. Rosenberg

Patrick G. and Shirley W.
Ryan Foundation

THE SHUBERT
FOUNDATION INC.

Carl and
Marilynn Thoma

Donna Van Eckeren

LEAD SPONSORS

Allstate Insurance
Company

Paul M. Angell Family
Foundation

Bulley & Andrews

Joyce Chelberg

City of Chicago

Embassy Suites Chicago
Downtown Magnificent
Mile and DoubleTree
Magnificent Mile

Lloyd A. Fry Foundation

Illinois Arts Council Agency

ITW

Kirkland & Ellis LLP

The John D. and
Catherine T. MacArthur
Foundation

National Endowment for
the Arts

Polk Bros. Foundation

Neal and Jennifer Reenan

The Segal Family
Foundation

ENDOWED FUNDS, CHAIRS, AND PROGRAMS

Mary and Nick Babson Fund to
Support Chicago Actors

The Canon in Honor of Barbara Gaines

The Chicago Music Theatre Endowment

The Davee Foundation WorldStage Fund

Ruth D. and Ken M. Davee New Works
and Education Fund

The Hurckes Fund for Artisans
and Technicians

Kirkland & Ellis Audience Enrichment Fund

Anstiss and Ronald Krueck
Stage Design Fund

The Malott Family Student Access Fund

Ray and Judy McCaskey Education Chair

Pritzker Foundation
Team Shakespeare Fund

John W. and Jeanne M. Rowe Inquiry
and Exploration Series

The Segal Family Foundation
Student Matinee Fund

Dick Simpson in memory of
Sarajane Avidon

Team Shakespeare Endowment

Carl and Marilyn Thoma
Artistic Director Chair

Gayle and Glenn R. Tilles Music Fund

The Sheldon and Bobbi Zabel
Bard Core Program

For more information about how you can support our work on stage, in schools, and in neighborhoods across our city, please contact the Development Office at development@chicagoshakes.com or 312.667.4983.

Cast

Older Allie

Older Noah

Younger Allie

Younger Noah

Middle Allie

Middle Noah

Nurse Joanna/Others

Mother/Nurse Lori/Others

Father/Son/Others

Georgie/Others/Dance Captain

Lon/Others

Sarah/Others

Fin/Justin/Others

MARYANN PLUNKETT*

JOHN BEASLEY*

JORDAN TYSON*

JOHN CARDOZA*

JOY WOODS*

RYAN VASQUEZ*

YASSMIN ALERS*

ANDRÉA BURNS*

JONATHAN BUTLER-DUPLESSIS*

DORCAS LEUNG*

OMAR LOPEZ-CEPERO*

SOPHIE MADORSKY

LIAM OH*

Understudies never substitute for listed players unless a specific announcement is made at the time of the performance: Yassmin Alers* for *Older Allie*, *Mother/Nurse Lori*; Alex Benoit for *Middle Noah*, *Lon*, *Fin/Justin*, *Father/Son*; Jonathan Butler-Duplessis* for *Older Noah*; Mary Ernster* for *Older Allie*; Jerica Exum* for *Middle Allie*, *Nurse Joanna*, *Sarah*, *Mother/Nurse Lori*; Jerome Harman Hardeman* for *Older Noah*, *Father/Son*; Dorcas Leung* for *Younger Allie*; Sophie Madorsky for *Georgie*, *Younger Allie*; RhonniRose Mantilla for *Middle Allie*, *Georgie*, *Sarah*, *Nurse Joanna*; Liam Oh* for *Younger Noah*; Carson Stewart for *Younger Noah*, *Fin/Justin*, *Lon*.

Production Stage Manager

Stage Manager

Assistant Stage Manager

VICTORIA NAVARRO*

KELLY STILLWELL*

KALEIGH BERNIER*

*denotes member of Actors' Equity Association.

Setting

A coastal town in the Mid-Atlantic.

The Past (1967)

Ten Years Later (1977)

And The Present (2021)

Orchestra

Keyboard/Conductor
Assistant Conductor
Guitar One
Guitar Two
Percussion
Bass
Violin
Viola
Cello
Harp
Reeds

Musicians Contractor
Electronic Music Design

Musicians Preparation

GEOFFREY KO^
KORY DANIELSON^
TOM VITACCO^
JUSTIN LaFORTE^
TINA LAUGHLIN^
SCOTT ROSENTHAL^
WENDY BENNER^
CLAUDIA LASAREFF-MIRONOFF^
KELSEY VANDERVALL^
ALISON ATTAR^
MATT BECK^

SEAN McNEELY^
BILLY JAY STEIN, HIRO IIDA,
AND ETHAN DEPPE
STRANGE CRANIUM
RUSSELL BARTMUS &
JoANN KANE MUSIC

Additional Creative Team

Associate Director
Associate Music Director
Associate Choreographer
Intimacy Director
Associate Scenic Designer
Associate Costume Designer
Assistant Costume Designer
Costume Shopper
Associate Lighting Designer
Assistant Lighting Designer
Associate Sound Designer
Assistant Sound Designers
Assistant Wig Designer

ASMERET GHEBREMICHAEL
ANNA EBBESEN^
EMILY MADIGAN
SASHA SMITH
MATTHEW BUTTREY
ANNIE LE
KITTY CASSETTI
CELESTE JENNINGS
WILBURN BONNELL
ERICA MAHOLMES
DANIEL LUNDBERG
EMILY HAYMAN
JAMIE DAVIS
JOANNE MIDDLETON-WEAVER

^denotes members of the Chicago Federation of Musicians, Local 10-208.

Profiles



YASSMIN ALERS

(Nurse Joanna)

CHICAGO SHAKESPEARE: Debut. **CHICAGO:** *On Your Feet!* (Oriental Theatre); *Clear* (Pritzker Pavilion). **BROADWAY:** *On Your Feet!* (Original

Broadway Cast), *The Rocky Horror Show*, Paul Simon's *The Capeman* (Original Broadway Cast), *Rent* (Original Broadway Cast). **OFF BROADWAY:** *Americano* (New World Stages). **INTERNATIONAL:** *The Who's Tommy* (Offenbach, Germany); *The Third from the Left* (Edinburgh, Scotland).

NATIONAL TOUR: *Rent*. **REGIONAL:** *Destiny of Desire* (Cincinnati Playhouse in the Park); *On Your Feet!* (The Gateway); *In the Heights* (Milwaukee Repertory Theater, Seattle Repertory Theatre, Cincinnati Playhouse in the Park, Portland Center Stage). **FILM:** *West Side Story*, *The Ten Commandments*, *The American Mall*, *Across the Universe*. **TELEVISION:** *The Americans* (FX); *The Code*, *Madam Secretary* (CBS); *Law & Order SVU* (NBC).



JOHN BEASLEY

(Older Noah)

CHICAGO SHAKESPEARE: Debut. **CHICAGO:** *Joe Turner's Come and Gone*, *Riverview*, *Two Trains Running* (Goodman Theatre). **REGIONAL:**

The Tempest (Nebraska Shakespeare); *Hamlet*, *Driving Miss Daisy* (Omaha Community Playhouse); *Death of a Salesman*, *Fences*, *Jitney* (John Beasley Theater and Workshop); *Jitney* (Alliance Theatre); *Fences*, *Jitney*, *Joe Turner's Come and Gone*, *Fences* (The Kennedy Center); *Fences* (Huntington Theatre Company).

AWARDS: IRNE award — Best Actor in a large theater. **FILM:** *Firestarter*, *SPELL*, *Walking Tall*, *The Apostle*, *Rudy*, *The Purge*. **TELEVISION:** *The Mandalorian* (Disney+); *The Immortal Life of Henrietta Lacks*, *Treme* (HBO); series regular on *The Soul Man* (TV Land); series regular on *Everwood* (WB); *CSI*, *NCIS* (CBS); *Your Honor* (Showtime).



ANDRÉA BURNS

(Mother/Nurse Lori)

CHICAGO SHAKESPEARE: Debut. **CHICAGO:** *On Your Feet!* (Oriental Theatre); *Clear* (Pritzker Pavilion). **BROADWAY:** *On Your Feet!* (Original

Broadway Cast), *The Rocky Horror Show*, Paul Simon's *The Capeman* (Original Broadway Cast), *Rent* (Original Broadway Cast). **OFF BROADWAY:** *Americano* (New World Stages). **INTERNATIONAL:** *The Who's Tommy* (Offenbach, Germany); *The Third from the Left* (Edinburgh, Scotland).

NATIONAL TOUR: *Rent*. **REGIONAL:** *Destiny of Desire* (Cincinnati Playhouse in the Park); *On Your Feet!* (The Gateway); *In the Heights* (Milwaukee Repertory Theater, Seattle Repertory Theatre, Cincinnati Playhouse in the Park, Portland Center Stage). **FILM:** *West Side Story*, *The Ten Commandments*, *The American Mall*, *Across the Universe*. **TELEVISION:** *The Americans* (FX); *The Code*, *Madam Secretary* (CBS); *Law & Order SVU* (NBC).

AWARDS: IRNE award — Best Actor in a large theater. **FILM:** *Firestarter*, *SPELL*, *Walking Tall*, *The Apostle*, *Rudy*, *The Purge*. **TELEVISION:** *The Mandalorian* (Disney+); *The Immortal Life of Henrietta Lacks*, *Treme* (HBO); series regular on *The Soul Man* (TV Land); series regular on *Everwood* (WB); *CSI*, *NCIS* (CBS); *Your Honor* (Showtime).



JONATHAN BUTLER-DUPLESSIS

(Father/Son)

CHICAGO SHAKESPEARE: Debut. **CHICAGO:** *On Your Feet!* (Oriental Theatre); *Clear* (Pritzker Pavilion). **BROADWAY:** *On Your Feet!* (Original

Broadway Cast), *The Rocky Horror Show*, Paul Simon's *The Capeman* (Original Broadway Cast), *Rent* (Original Broadway Cast). **OFF BROADWAY:** *Americano* (New World Stages). **INTERNATIONAL:** *The Who's Tommy* (Offenbach, Germany); *The Third from the Left* (Edinburgh, Scotland).



JOHN CARDOZA

(Younger Noah)
CHICAGO SHAKESPEARE:
 Debut. **BROADWAY:**
Jagged Little Pill.
REGIONAL: American
 Repertory Theater,
 The Old Globe.

Goodspeed Opera House, STAGES
 St. Louis, Bucks County Playhouse,
 TheaterWorks Hartford. **EDUCATION:**
 BFA, Boston Conservatory at Berklee.



DORCAS LEUNG

(Georgie/Dance Captain)
CHICAGO SHAKESPEARE:
 Debut. **BROADWAY:** Gigi
 Van Tran in *Miss Saigon*.
OFF BROADWAY: Dou Yi
 in *Snow in Midsummer*
 (Classic Stage Company).

TOUR: roles of Eliza, Angelica, Peggy/Maria
 in first National Tour of *Hamilton*. **REGIONAL:**
 Despereaux in *The Tale of Despereaux*
 (Berkeley Repertory Theatre); Cosette in
Les Misérables, Christmas Present in
A Christmas Carol (Dallas Theatre Center);
 Little Red in *Into the Woods* (Barrington
 Stage Company); *Les Misérables* (The
 Muny); *Bye Bye Birdie* (Goodspeed Opera
 House). **TELEVISION:** *Bull*, *Madam Secretary*
 (CBS). [she, her]



OMAR LOPEZ-CEPERO

(Lon)
CHICAGO SHAKESPEARE:
 Debut. **CHICAGO:** Frederic
 in *Pirates of Penzance*
 (Marriott Theatre).
BROADWAY: *On Your
 Feet!*, *American Idiot*.

OFF BROADWAY: *The Unsinkable Molly
 Brown* (The Transport Group); *The
 Capeman* (Public Theater). **TOUR:** Judas
 in *Jesus Christ Superstar* (50th Anniversary
 Tour); Emilio Estefan in *On Your Feet!*
 (The Muny, Starlight Theatre Kansas City).
REGIONAL: Armando in *Paint Your Wagon*
 (The Muny); Alejandro in *The Flamingo Kid*
 (Hartford Stage); Sky Masterson in *Guys
 and Dolls* (Theatre Under the Stars);
 Che in *Evita* (National Tour, Fulton Theatre);
 Peron in *Evita* (Bay Street Theater).
TELEVISION: *Blue Bloods*, *Vegas* (CBS);
The Detour (TBS). **EDUCATION:** BM in vocal
 performance, University of Miami.



SOPHIE MADORSKY

(Sarah)
CHICAGO SHAKESPEARE:
 Debut. **REGIONAL:** *Into
 the Woods* (The Town
 Hall); *Nice Work If You
 Can Get It*, *Merrily We
 Roll Along* (Summer
 Repertory Theatre). **CONCERT:** featured
 singer at Carnegie Hall, Jazz at Lincoln
 Center, Severance Hall. **EDUCATION:** BFA
 in musical theater, University of Michigan.

Repertory Theatre). **CONCERT:** featured
 singer at Carnegie Hall, Jazz at Lincoln
 Center, Severance Hall. **EDUCATION:** BFA
 in musical theater, University of Michigan.



LIAM OH

(Fin/Justin)
CHICAGO SHAKESPEARE:
 Debut. **CHICAGO:** *Next
 to Normal* (Writers
 Theatre). **TELEVISION:**
The Thing about Harry
 (Freeform). **EDUCATION:**

BA in theatre, Northwestern University.
AWARDS: YoungArts Winner 2018.



MARYANN PLUNKETT

(Older Allie)
CHICAGO SHAKESPEARE:
 Debut. **BROADWAY:**
Agnes of God, *Sunday
 in the Park with George*,
Me and My Girl (Tony
 Award), *The Crucible*,

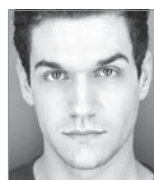
St. Joan, *A Man for All Seasons*, *The
 Seagull*. **OFF BROADWAY:** *The Lucky Ones*,
Aristocrats, Richard Nelson's 12 play
Rhinebeck Panorama (seen over a span of
 11 years, onstage in NY, and on tour around
 the world). **FILMS:** *A Beautiful Day in the
 Neighborhood*, *Little Women*, *MAD*, *Blue
 Valentine*, *The Family Fang*, *The Rhinebeck
 Panorama*, and the upcoming *Showing Up*.
TELEVISION: recurring roles on both
Manifest (NBC) and *Dr. Death* (Peacock);
The Knick (Cinemax); *Chicago Med*, *Law
 and Order* franchise, *Star Trek: The Next
 Generation* (NBC). Plunkett is a founding
 member of Portland Stage Company and
 is a coach and mentor. She has performed
 Shakespeare, Chekhov, and as narrator
 with the Britten Sinfonia.



JORDAN TYSON

(Younger Allie)
CHICAGO SHAKESPEARE:
 Debut. **OFF BROADWAY:**
*Dixie Puffy in The Streets
 of New York* (Irish
 Repertory Theatre);
 Alma in *Folk Wandering*

(American Repertory Theatre); **REGIONAL:**
Kizette in Lempicka (La Jolla Playhouse);
 Caroline in *I and You* (Weston Theater
 Company); Ariel in *The Little Mermaid*
 (Broadway Method Academy). **TELEVISION:**
Capri in The Chair (Netflix). **FILM:** *Jenny in
 Vampires vs. the Bronx* (Netflix). **AWARDS:**
 Audelco Rising Star Award (2017), 2018
 YesBroadway 40 Under 40.



RYAN VASQUEZ

(Middle Noah)
CHICAGO SHAKESPEARE:
 Debut. **BROADWAY:**
*Hamilton: An American
 Musical*, *Waitress*
 (Original Broadway
 Cast), *Wicked*. **OFF**

BROADWAY: *The Wrong Man*. **US TOUR:**
Hamilton: An American Musical. **REGIONAL:**
 The Muny, Sacramento Music Circus,
 Music Theatre Wichita, Farmers Alley
 Theatre. **FILM:** *tick, tick... BOOM!*, *Vivo*,
In the Heights. **TELEVISION:** *Curb Your
 Enthusiasm* (HBO); *The Code*, *The Good
 Fight* (CBS). **EDUCATION:** BFA, University
 of Michigan. **AWARDS:** 2020 Drama Desk
 Award nominee, 2022 Chita Rivera
 Award Recipient.



JOY WOODS

(Middle Allie)
CHICAGO SHAKESPEARE:
 Debut. **BROADWAY:**
SIX: the Musical.
OFF BROADWAY: *Little
 Shop of Horrors*.



ALEX BENOIT

(Understudy)
CHICAGO SHAKESPEARE:
 Debut. **CHICAGO:**
Into the Woods
 (Jeff Nominee—Best
 Ensemble, Writers
 Theatre); *Mamma Mia!*,

Matilda (Drury Lane Theatre Oakbrook);
Something in the Game (American Music
 Theatre Project). **REGIONAL:** The DIO.
EDUCATION: MA, London Academy of
 Music and Dramatic Art.



MARY ERNSTER

(Understudy)
CHICAGO SHAKESPEARE:
 Mrs. Potts in *Beauty
 and the Beast*, Glinda in
The Wizard of Oz.
CHICAGO: *The Music Man*,
 Titania in *Another*

Midsummer Night, A Christmas Carol
 (Goodman Theatre); *The Dead* (Court
 Theatre); *The Sound of Music*, *The Merry
 Widow* (Lyric Opera of Chicago); *My Fair
 Lady* (Paramount Theatre); *Most Happy
 Fella* (Drury Lane Theatre Oakbrook);
The Merchant Of Venice (Oak Park Festival
 Theatre); *Much Ado About Nothing* (First
 Folio Theatre); *The Light in the Piazza*,
The King and I, 1776 (Marriott Theatre);
BROADWAY: *War Paint*. **REGIONAL:** *Living on
 Love* (Peninsula Players); *Matador* (Coconut
 Grove Playhouse). **TELEVISION:** *Chicago
 Med*, *Chicago Justice* (NBC), *Empire* (FOX),
Love Hurts (ABC). **EDUCATION:** BA in music,
 University of Northern Colorado; MM,
 Northwestern University. **AWARDS:** 12
 Joseph Jefferson Award nominations and
 2 Joseph Jefferson Awards.



JERICA EXUM

(Understudy)
CHICAGO SHAKESPEARE:
To Be. **CHICAGO:** *Newsies*,
Cinderella (Paramount
 Theatre); *Women of Soul*
 (The Mercury Theater &
 Black Ensemble Theater).

NATIONAL TOUR: Nurse Norma in *Waitress*.
REGIONAL: Ivoryton Playhouse, Little
 Theatre on the Square. **INTERNATIONAL:**
 Hong Kong Disneyland, Norwegian Cruise
 Line, Universal Studios Japan.



JEROME HARMANN HARDEEMAN

(Understudy)
CHICAGO SHAKESPEARE:
 Debut. **BROADWAY:**
Swing. **TOURS:** *Dirty
 Dancing*, *Dreamgirls*,
Kiss of the Spiderwoman,

Cats, *Evita*, *Joseph and the Amazing
 Technicolor Dreamcoat*. **REGIONAL:** Arena
 Stage, Actors Theatre of Louisville, Paper
 Mill Playhouse, Virginia Stage Company,
 Crossroads Theatre Company, Cincinnati
 Playhouse in The Park, Cleveland Play
 House, Arkansas Repertory Theatre, Geva
 Theatre, Maine State Music Theatre,
 McCarter Theatre, Riverside Theatre.
FILM: *Annie*, *The Peacemaker*, *Regarding
 Veronica*. **TELEVISION:** *FBI*, *SNL* (NBC);

The Last O.G. (TBS); *Teenage Euthanasia* (Adult Swim); *Let the Right One In* (Showtime); *One Life to Live*, *Glee* (ABC). **NARRATION:** *The New Negro: The Life of Alain Locke* by Jeffrey C. Stewart, *Four Hundred Souls* by Ibram X. Kendi and Keisha N. Blain. **EDUCATION:** Valley Forge Military Academy and College, The City University of New York, Brooklyn College.



RHONNIROSE MANTILLA
(Understudy)

CHICAGO SHAKESPEARE: Debut. **REGIONAL:** New London Barn Playhouse, The Muni. **EDUCATION:** BM in music theatre, Baldwin Wallace University (2022).



CARSON STEWART
(Understudy)

CHICAGO SHAKESPEARE: Debut. **NATIONAL TOUR:** *Fame*. **EDUCATION:** BA, Northwestern University.



INGRID MICHAELSON

(Music & Lyrics/Co-Vocal Arrangements) **CHICAGO SHAKESPEARE:** Debut.

Michaelson is a New York City-based singer-songwriter with eight full-length albums released via her own record label, Cabin 24 Records, featuring her Gold and Platinum hits, including "The Way I Am," "Girls Chase Boys," and "You and I." As an actress, she made her Broadway debut in *Natasha, Pierre & the Great Comet of 1812*. Her credits as a composer for TV and film include the upcoming Disney film *Penelope* and ABC/Hulu's *Little Fires Everywhere* (Emmy Nomination for the original song "Build It Up"). **EDUCATION:** BA, Binghamton University's musical theater program.



BEKAH BRUNSTETTER

(Book)

CHICAGO SHAKESPEARE: Debut. **CHICAGO:** *The Cake* (Rivendell Theatre Ensemble). *The Cake* has been produced regionally and internationally over 80 times. Her plays have been produced by Manhattan Theatre Club, Ars Nova, Atlantic Theater, South Coast Repertory, La Jolla Playhouse, Alley Theatre, and more. Her musical *A.D. 16* just premiered at the Olney Theatre Center. As a writer and producer, she has worked on Netflix's *Maid* and NBC's *This Is Us*. She has developed pilots with Bad Robot, Hulu, Apple TV, and FX. **EDUCATION:** MFA, The New School for Drama, BA, UNC Chapel Hill. **AWARDS:** Brunstetter won a Writers Guild Award for Best Adapted Long Form for *Maid* and is a three-time Emmy nominee for *This Is Us*.



MICHAEL GREIF

(Co-Director)

CHICAGO SHAKESPEARE: Debut. **CHICAGO:** *War Paint*, Randy Newman's *Faust* (Goodman Theatre); *Mad Forest* (Remains Theatre

Ensemble). **BROADWAY:** *Dear Evan Hansen*, *Next to Normal* (Pre-Broadway at Arena Stage, Second Stage Theatre); *War Paint*, *If/Then*, *Grey Gardens* (Pre-Broadway at Playwrights Horizons); *Never Gonna Dance*, *Rent* (Pre-Broadway at New York Theatre Workshop). **OFF BROADWAY:** *Make Believe*, *Parallelogram* (Second Stage Theatre); *The Low Road*, *The Intelligent Homosexual's Guide, Fucking A*, *Dogeaters*, *Machinal* (Public Theater); *Our Lady of Kibeho*, *Angels in America*, *Landscape of the Body*, *A Few Stout Individuals* (Signature Theater). **REGIONAL:** Artistic director at La Jolla Playhouse, 1995-1999, ten seasons with Williamstown Theater Festival. **AWARDS:** 4 Tony nominations, 3 Lortel nominations, 3 Obie Awards. **EDUCATION:** BS, Northwestern University; MFA, University of California, San Diego.



SCHELE WILLIAMS

(Co-Director)

CHICAGO SHAKESPEARE: Debut.

Williams is director of the 2023 revival of *Aida* (Disney Theatrical Group), the upcoming 2024 Broadway revival of *The Wiz*, along with new musicals *Mandela a Revolutionary Musical* (New Vic Theatre, 2022), and the world premiere of *Hidden Figures*. Williams has directed at regional theaters and festivals across the country and has a long history of work on Broadway in *Rent*, *Aida*, and *Motown: The Musical*. Passionate about pairing social justice with the arts, Schele is a founding member of Black Theatre United, an organization committed to dismantling systemic racism on our streets and stages. She is the author of the 2022 award-winning children's book *Your Legacy: A Bold Reclaiming of Our Enslaved History*.



KATIE SPELMAN

(Choreographer)

CHICAGO: *Cabaret* (Jeff Award nomination—Best Musical, Paramount Theatre); *Oklahoma* (Jeff Award nomination—Best Choreography,

Paramount Theatre); *The Dead* (Court Theatre); *Thaddeus and Slocum* (Lookingglass Theatre Company); Writers Theatre, The Hypocrites, TimeLine Theatre Company, Sideshow Theatre Company, The Inconvenience. **ACTING CREDITS:** Goodman Theatre, Writers Theatre, Chicago Shakespeare Theater, Paramount Theatre, Marriott Theatre, Music Theatre Company, Drury Lane Theatre Oakbrook. **BROADWAY ASSOCIATE:** *Moulin Rouge*, *Amelie*, *American Psycho*, *Once*. **REGIONAL:** *Cabaret* (Helen Hayes nomination—Best Choreography), *A.D. 16* (Olney Theatre Center); *Oklahoma* (CCC nomination—Best Choreography, Goodspeed Musicals); *Tommy* (Denver Center for the Performing Arts); collaborations with Shakespeare Theatre Company, Ensemble Theatre Company, Camerata Bern, TikTok, Asolo Repertory Theatre, Children's Theatre Company. **INTERNATIONAL:** Associate Director of *Close to You* (Menier Chocolate Factory, West End). **EDUCATION:** Northwestern University. **AWARDS:** SDCF Agnes de Mille commission. Spelman's new work *simone* premiered in 2019.

CARMEL DEAN (Music Supervisor and Arrangements/Co-Vocal Arrangements/Orchestrations)

CHICAGO SHAKESPEARE: Debut. **BROADWAY:** *Funny Girl*, *If/Then*, *Hands on a Hardbody*, *American Idiot*, *The 25th Annual Putnam County Spelling Bee*. **OFF BROADWAY:** *Renascence*, *Really Rosie*, *Everyday Rapture*, *Vanities*, *Elegies*. **INTERNATIONAL:** *Fun Home*, *Well-Behaved Women*, *Chicago*, *2000 Sydney Olympics Opening & Closing Ceremonies*. **TELEVISION:** *Up Here*. **EDUCATION:** MFA in musical theatre writing, New York University. **AWARDS:** Fulbright Scholar, Sydney Theatre Award for Best Musical Direction, Off Broadway Alliance Award for Best New Musical (*Renascence*), Billie Burke Ziegfeld Award for Composition.

DAVID ZINN (Scenic Design)

CHICAGO SHAKESPEARE: Debut. **CHICAGO:** *Ms Blakk for President*, *The Minutes*, *Visiting Edna*, *Airline Highway* (Steppenwolf Theatre Company); *The Last Ship* (CIBC Theatre/Broadway); *Spongebob Squarepants* (James M. Nederlander Theatre/Broadway). **BROADWAY:** *Funny Girl*, *The Minutes*, *Diana*, *Choir Boy*, *Torch Song Trilogy*, *Boys in the Band*, *Amelie*, *The Humans*, *Fun Home*. **OFF BROADWAY:** *Kimberly Akimbo*, *Paris* (Atlantic), *The Flick*, *Hir*, *Kin*, *Placebo*, *Circle Mirror Transformation* (Playwrights Horizons); *We're Gonna Die*, *Make Believe*, *Dogfight* (Second Stage Theater); *The Visitor*, *The Outer Space*, *Troilus and Cressida* (Public Theater); Berkeley Repertory Theatre, Center Theatre Group, Oregon Shakespeare Festival, Seattle Repertory Theatre, American Repertory Theatre, Guthrie Theater, Yale Repertory Theatre. **INTERNATIONAL:** National Theatre, Young Vic, Theater Basel, Staatsoper Berlin. **AWARDS:** Tony, Obie, Hewes.

BRETT BANAKIS (Scenic Design)

CHICAGO SHAKESPEARE: Debut. **CHICAGO:** *The Devil Wears Prada* (Broadway in Chicago). **BROADWAY:** *The Cher Show*. **REGIONAL:** Upcoming world-premiere musical *The Outsiders* (La Jolla Playhouse); *Camp Siegfried* (Second Stage Theater); *My Own Personal Exegesis* (LCT3 Program, Lincoln Center Theater). **INTERNATIONAL:** Scenic supervisor for all worldwide productions of *Harry Potter and the Cursed Child*. **ARCHITECTURAL & INTERIOR DESIGN:** New York City's Lyric Theatre Auditorium; Melbourne, Australia's Princess Theatre; San Francisco's Curran Theatre; Hamburg, Germany's Mehr! Großmarkt Theatre;

Toronto's Ed Mirvish Theatre; Tokyo's Akasaka ACT Theater. Banakis is a designer for theater, film, opera, and environment based in Brooklyn, New York. He serves on the faculty of New York University Tisch School of the Arts. @brettjbanakis
www.brettjbanakis.com

PALOMA YOUNG (Costume Design)

CHICAGO SHAKESPEARE: *The Tempest*. **BROADWAY:** *Peter and the Starcatcher*; *Natasha, Pierre & the Great Comet of 1812*, *Bandstand*, *Lobby Hero*, *Time and the Conways*, & *Juliet* (upcoming). **OFF BROADWAY:** *Alice by Heart*, *Moscow Moscow Moscow Moscow Moscow*, *The Pain of My Belligerence*, *Preludes*, *Fly By Night*. **REGIONAL:** The Old Globe, La Jolla Playhouse, Berkeley Repertory Theatre, Oregon Shakespeare Festival, Mixed Blood. **EDUCATION:** MFA, University of California San Diego. **AWARDS:** 2012 Tony Award, 2017 Tony Nomination, 2014 & 2019 Lortel Awards, 2011, 2013, 2017, 2019 Drama Desk Nominations, 2019 Olivier Nomination, 2017 TDF/Kitty Leech Young Master Award.

BEN STANTON (Lighting Design)

CHICAGO SHAKESPEARE: Debut. **CHICAGO:** co-designer *Goodnight Oscar* (Goodman Theatre). **BROADWAY:** *The Rose Tattoo*, *Darren Brown: Secret*, *Regina Spektor: Live on Broadway*, *Junk*, *Six Degrees of Separation*, *Fully Committed*, *Deaf West's Spring Awakening*, *Fun Home*, *An Enemy of the People*, *Seminar*. **OFF BROADWAY:** *Unknown Soldier*, *Pain of My Belligerence* (Playwrights Horizons); *Make Believe* (Second Stage Theater); *The Mother* (Atlantic Theater Company); *The Light* (MCC Theater). **CONCERTS AND TOURS:** Regina Spektor, Sufjan Stevens, The National, St. Vincent, & David Byrne. **AWARDS:** 3 Tony Award nominations, The Lucille Lortel Award, IRNE, 2 Ovation Awards, OBIE for Sustained Excellence in Lighting Design. www.benstanton.com

NEVIN STEINBERG (Sound Design)

CHICAGO SHAKESPEARE: Debut. **BROADWAY:** *Tina: The Tina Turner Musical* (Tony nomination), *Hadestown* (Tony Awards), *Hamilton*, *Dear Evan Hansen*, *Freestyle Love Supreme*, *The Cher Show*, *Bandstand*, *Bright Star*, *It Shoulda Been You*, *Mothers and Sons*, *Rodgers & Hammerstein's Cinderella* (Tony nomination), *The Performers*, *Magic/Bird*,

over 30 additional Broadway productions with Acme Sound Partners and 5 additional Tony nominations for *The Gershwin's Porgy and Bess*, *Bengal Tiger at the Baghdad Zoo*, *Fences*, *Hair*, *In the Heights*.

MIA NEAL (Hair & Wig Design)

CHICAGO SHAKESPEARE: Debut. Neal is a highly-praised hairstylist and wig designer for film, television and theater, who made history alongside collaborator Jamika Wilson as the first Black nominees and winners in the best hair and makeup category at the Academy Awards. In addition to her Oscar, Neal's intricate wig building for *Ma Rainey's Black Bottom* also led her to be recognized by BAFTA, Critics Choice, Hollywood Critics Association, and Variety Artisans awards. Recognized as one of *Essence's* most recent "Black Women in Hollywood to Know," her credits include *Uncut Gems*, *The Humans*, Tyler Perry's *A Jazzman's Blues*, *Pose*, and *Annie Live*, for which she won an Emmy award for Outstanding Hairstyling for a Variety, Nonfiction or Reality Program. Before breaking into film and television, Neal began her career on Broadway, where she won the first ever Drama Desk Award for Outstanding Wig and Hair for her work on *Shuffle Along*. She also served as the hair designer for *A Raisin in the Sun*, *Iceman Cometh*, *Malcolm X the Opera*, *Trading Places*, and soon *KPop the Musical*. Neal is a graduate of The Juilliard School Professional Internship Program for Wigs and Makeup and attended Jackson State University. She is originally from Gary, Indiana.

JOHN CLANCY (Orchestrations)

CHICAGO SHAKESPEARE: Debut. **CHICAGO:** *Shrek the Musical* (Tony/Drama Desk nominations, Cadillac Palace Theatre/Broadway). **BROADWAY:** *Diana*, *Mean Girls* (Tony nomination), *Fun Home* (Tony/Drama Desk nominations), *The Prom*, *Tuck Everlasting*, *Cats* 2016 (dance arrangements). **OFF BROADWAY/REGIONAL:** *The Karate Kid*, 1776 (2022 Revival), *The Secret Life of Bees*, *Kimberly Akimbo*, *Gun & Powder*, *Becoming Nancy*, *Soft Power* (dance arrangements), *Fortress of Solitude*, *Jasper in Deadland*, *Just So*. Clancy arranged strings for Rihanna's NBA All-Star Game 2011 Halftime Show, as well as arrangements for Sara Bareilles, 2018 Tony Awards Opening.

THE TELSEY OFFICE (Casting)

With offices in both New York and Los Angeles, The Telsey Office casts for theater, film, television, and commercials. The Telsey Office is dedicated to creating safe, equitable, and anti-racist spaces through collaboration, artistry, heart, accountability, and advocacy.

BOB MASON (Chicago Casting Director)

is celebrating his 22nd anniversary as CST's casting director, where his credits include over 150 productions and programs and 35 plays in Shakespeare's canon. In addition to numerous productions with Barbara Gaines, other productions of note include: a host of Sondheim musicals (*Follies*, *Sunday in the Park with George*, *A Little Night Music*, *Passion Road Show*, *Gypsy*, directed by Gary Griffin); *SIX* (CST, Broadway, A.R.T., Ordway Center, the Citadel); *Ride the Cyclone* directed by Rachel Rockwell (CST, off Broadway at MCC, Fifth Avenue/ACT, The Alliance); *Rose Rage: Henry VI, Parts 1, 2 and 3*, directed by Edward Hall (CST, The Duke on 42nd Street); and *The Molière Comedies*, directed by and starring Brian Bedford. He also directed and co-created *Shakespeare Tonight!* with Beckie Menzie, as part of CST's Shakespeare 400 Festival. Prior to casting, Mason enjoyed a career as a Jeff Award-winning actor and singer. He has been a visiting educator for Northwestern University, the School at Steppenwolf, the Guthrie BFA program, Acting Studio Chicago, and DePaul, Columbia, and Roosevelt University, among others.

GEOFFREY KO (Music Director)

CHICAGO SHAKESPEARE: Debut. **CHICAGO:** Orchestrations for *Sweet Charity*, *October Sky* (Marriott Theatre). **BROADWAY:** *Be More Chill*. **OFF BROADWAY:** *American Songbook* (Lincoln Center); *Broadway Bounty Hunter*, *Baby* with Richard Maltby Jr., *Billy and the Killers*, *Generation Me*, *Renascence*. **INTERNATIONAL:** *Ratatouille: The TikTok Musical*; *Ride* (West End). **REGIONAL:** Disney's *A Jolly Holiday*, *The Honeymooners* (Paper Mill Playhouse); *Mystic Pizza* (Ogunquit Playhouse); *Row* (Williamstown Theatre Festival); *May We All* (Tennessee Performing Arts Center); *Love in Hate Nation* (Two River Theater); *Punk Rock Girl* (The Argyle Theatre); *Other World* (Bucks County Playhouse); *Double Standards* (The Town Hall); The American Pops Orchestra, The Jimmy Awards. **EDUCATION:** BA, Northwestern University. @geoffreyhko

ASMERET GHEBREMICHAEL (Associate Director)

CHICAGO SHAKESPEARE: Debut. **BROADWAY:** *The Book of Mormon*, *Elf*, *Legally Blonde*, *Spamalot*, *Wicked*, *Footloose*. **WEST END:** *Dreamgirls*, *The Book of Mormon*. **OFF BROADWAY:** *The New Group's Sweet Charity*, *In the Heights*. **FILM:** *Confessions of a Shopaholic*, *Red Hook*, *The Drummer*. **TELEVISION:** *WeCrashed* (Apple TV+); *Bonding*, *Get Even* (Netflix); *Trevor Moore: High in Church*, consultant on *South Park: Pandemic Special* (Comedy Central). **AWARDS:** Drama Desk for *In the Heights*, Lortel, Audelco, Chita Rivera nominations for *Sweet Charity*, IARA Nomination for *Dreamgirls*. Ghebremichael is artistic director of Big Sky National Theatre Festival.

ANNA EBBESEN (Associate Music Director)

CHICAGO SHAKESPEARE: Debut. **CHICAGO:** Music director and conductor on *Paradise Square* (The Nederlander Theatre). **OFF-BROADWAY/REGIONAL:** Music supervision and orchestrations on *Mary & Max* (Theatre Calgary); music supervision and co-orchestrations *We Were Everywhere* (Lewis Center); music director on *Girl from Nowhere* (New York Musical Theatre); music director on *The Snow Queen* (Signature Theatre Company). **FILM:** Supervised and orchestrated over twenty movie musical shorts on the film festival circuit including scores by Anna K. Jacobs, Zoe Sarnak, and Avi Amon. **MENTORSHIP:** New York Youth Symphony Musical Theatre Composition Program (Music Director), Maestra Music, American Theatre Wing/National Endowment of the Arts Songwriting Challenge.

EMILY MADIGAN (Associate Choreographer)

CHICAGO SHAKESPEARE: Debut. **CHICAGO:** associate choreographer on *Grease*, *Footloose* (Marriott Theatre). **REGIONAL:** Associate choreographer credits include *AD 16* (Olney Theater); *Shout, Sister, Shout* (Seattle Repertory Theatre). **PERFORMANCE CREDITS:** *Memphis* (Artistry); *In the Heights* (Milwaukee Repertory Theater, Seattle Repertory Theatre, Cincinnati Playhouse in the Park, Portland Center Stage); *West Side Story* (Guthrie Theater); *West Side Story* (Ordway Center for the Performing Arts); *Hairspray* (Chanhassen Dinner Theatres); *Cabaret* (Theatre Latté Da).

VICTORIA NAVARRO (*Production Stage Manager*) **CHICAGO SHAKESPEARE:** Debut. **BROADWAY:** *Jagged Little Pill*, *The Lion King*, *The Color Purple*. **OFF BROADWAY:** *The Unsinkable Molly Brown*. **NATIONAL TOURS:** *Matilda*, *Annie*, *Oliver!*, *Seussical*. **REGIONAL:** Paper Mill Playhouse, The Old Globe, La Jolla Playhouse. **EDUCATION:** MFA in stage management, University of California, San Diego; MA in elementary education, University of Southern California.

KELLY STILLWELL (*Stage Manager*) **CHICAGO SHAKESPEARE:** Debut. **BROADWAY:** *Ain't Too Proud*, *Frozen*, *Dear Evan Hansen*, *Fun Home*, *Rocky*, *Romeo and Juliet*, *Jekyll & Hyde*, *Legally Blonde*, *The Color Purple*, *Dirty Rotten Scoundrels*. **NATIONAL TOURS:** *Rudolph*, *Jekyll & Hyde*, *Legally Blonde*, *Jesus Christ Superstar*. **OFF BROADWAY:** 4000 Miles.

KALEIGH BERNIER (*Assistant Stage Manager*) **CHICAGO SHAKESPEARE:** Debut. **BROADWAY:** *Mrs. Doubtfire*, *True Crime Obsessed on Broadway*, *Be More Chill*. **OFF BROADWAY:** Lincoln Center, Atlantic Theater, Irish Repertory Theatre, Primary Stages, Rattlestick Playwrights Theater, All for One Theater. **NATIONAL TOURS:** *Cinderella* (2nd National Tour); **REGIONAL:** Center Theatre Group, Williamstown Theatre Festival, Warren Miller Performing Arts Center.

RICK BOYNTON (*Creative Producer*) focuses on current and future artistic planning and production, as well as the development of all new plays, musicals, and adaptations for Chicago Shakespeare Theater (CST). Projects include: *SIX* (CST, American Repertory Theater, Citadel Theatre, Ordway Center for the Performing Arts, Broadway — Tony Award Nominee), *The Book of Joseph* (CST, Everyman Theatre, Off Broadway as The Lucky Star), *Ride the Cyclone* (CST, MCC, 5th Avenue/ACT, Alliance Theatre), *Sense and Sensibility* (CST, Old Globe), *Cadre* (co-director) (CST, Johannesburg, Grahamstown, Edinburgh, Vancouver), *Othello: The Remix* (CST, London, Germany, Edinburgh, South Korea, New York), *Funk It Up About Nothin'* (CST, Edinburgh, Australian tour, London), *A Flea in Her Ear* (CST, Williamstown Theatre Festival), *The Three Musketeers* (CST, Boston, London), *The Emperor's New Clothes*, *The Adventures of Pinocchio*, *Murder for Two* (CST, New York), and *The Feast: an intimate Tempest* (in collaboration with Redmoon).

Former artistic director of The Marriott Theatre and multiple Jeff Award-winning actor, he has starred in productions nationally, including CST's production of *A Flea in Her Ear* as Camille (Jeff Award, After Dark Award). As casting director/associate at Jane Alderman Casting, projects included: the television series *Early Edition*, *Missing Persons*, *Untouchables*, and *ER*; the films *While You Were Sleeping* and *Hoodlum*, among others; and numerous national tours. Boynton has lectured at his alma mater Northwestern University and is the former president of the board of the National Alliance for Musical Theatre.



BARBARA GAINES (*Artistic Director/Carl and Marilyn Thoma Chair*) has directed nearly 60 productions at Chicago Shakespeare since founding the Theater in 1986,

including thirty of Shakespeare's plays. Honors include the 2008 Tony Award for Outstanding Regional Theatre, the prestigious Honorary OBE (Officer of the Most Excellent Order of the British Empire) in recognition of her contributions strengthening British-American cultural relations, the Making History Award, Chicago Innovation Hall of Fame, as well as multiple Joseph Jefferson Awards for Best Production and for Best Director. Gaines has directed at the Royal Shakespeare Company in Stratford-upon-Avon, Lyric Opera of Chicago, and The Old Globe in San Diego.



CRISS HENDERSON (*Executive Director*) has produced the Theater's past 33 seasons. Under his leadership, CST has become one of Chicago's most celebrated cultural

organizations and a leading American regional theater, honored with the 2008 Tony Award for Outstanding Regional Theatre, as well as multiple Laurence Olivier and Joseph Jefferson Awards. He oversaw the Theater's move to its home on Navy Pier in 1999 and led the recent development of The Yard at Chicago Shakespeare. In 2016 he spearheaded the citywide, yearlong celebration of Shakespeare's legacy, Shakespeare 400 Chicago. Henderson has garnered multiple honors, including: the 2013 Cultural Innovation Award from the Chicago Innovation

Awards; Arts Administrator of the Year by *Arts Management Magazine* at the Kennedy Center; recognition in *Crain's Chicago Business* "40 under 40"; and the Chevalier de L'Ordre des Arts et des Lettres by the Minister of Culture of France. In 2019 with Barbara Gaines, he was honored with the Making History Award, given to Chicagoans whose contributions to the city have made it "a better and more vibrant place to live." Henderson has served on the boards of directors of the League of Chicago Theatres and Arts Alliance Illinois, and for many years as president of the Producers' Association of Chicago-area Theaters. Henderson is director of DePaul University's MFA/Arts Leadership Program, a two-year graduate-level curriculum in arts management training created through a partnership between Chicago Shakespeare Theater and The Theatre School.

Chicago Shakespeare productions are made possible in part by the Illinois Arts Council Agency and a CityArts Grant from the City of Chicago Department of Cultural Affairs and Special Events.

Chicago Shakespeare is a constituent of the Theatre Communications Group, Inc., the national service organization of non-profit theaters; National Alliance for Musical Theatre; Shakespeare Theatre Association; Arts Alliance Illinois; the League of Chicago Theatres; and Ingenuity, Inc.



Actors' Equity Association (AEA), founded in 1913, represents more than 45,000 actors and stage managers in the United States. Equity seeks to advance, promote and foster the art of live theatre as an essential component of our society. Equity negotiates wages and working conditions, providing a wide range of benefits, including health and pension plans. AEA is a member of the AFL-CIO, and is affiliated with FIA, an international organization of performing arts unions. The Equity emblem is our mark of excellence. www.actorequity.org



The Directors and Choreographer are members of the **STAGE DIRECTORS AND CHOREOGRAPHERS SOCIETY**, a national theatrical labor union.



UNITED
SCENIC
ARTISTS

The scenic, costume, lighting, and sound designers of this production are represented by United Scenic Artists, Local USA-829 of IATSE.



All Musicians are members of the **Chicago Federation of Musicians Local 10-208**.



LOCAL 798
Make-up Artists & Hair Stylists

The hair & wig designer of this production is represented by Make-up Artists & Hair Stylists, Local 798 of IATSE

Additional Production Credits

NEW YORK PRODUCTION TEAM

TODD M. FRANK
Production Carpenter

RONALD SCHWIER
Production Electrician

NICK BORISJUK
Production Sound

SCOTT RUTKOWSKI
Production Prop Supervisor

RISA STROBEL
Assistant Electrician

COLIN SCOTT
Moving Light Programmer

NEW YORK STAGE CREW

BOBBY HENTZE
Head Carpenter/Automation

ZAK KATZ
Head Electrician/Lead Spot

MICHAEL CRITCHLOW
Head Props

JOSH VASQUEZ
Assistant Carpenter

NEW YORK PRODUCTION SERVICES

ALCHEMATION
New York Producing Office

THEATER MATTERS
New York General Management Office

ERIC ROTHSTEIN
New York Company Management

THE TELSEY OFFICE
PATRICK GOODWIN, CSA
MEGHAN RYAN
Casting

THE PEKOE GROUP
New York Marketing and Advertising

BONEAU BRYAN BROWN
New York Public Relations

LEVINE PLOTKIN & MENIN, LLP
Production Counsel

WITHUM SMITH + BROWN, PC
Production Accountants

GALBRAITH & CO.
Production Comptroller

CHECKS & BALANCES
PAYROLL
Payroll Services

SIGNATURE BANK
Banking

THE ARTS INSURANCE
PROGRAM, LLC
BOB MIDDLETON
MEGHAN COLEMAN
TONI PRETO
Insurance

THE A TEAM
TZELL TRAVEL SERVICES
Travel Agent

ROAD REBEL
Travel Services

HUDSON THEATRICAL ASSOCIATES

NEIL MAZZELLA
Chief Executive Officer

IRENE WANG
Vice President, Corporate
Development

BRIANNA STANKIEWICZ
Associate Production Manager

MATT MARSDEN
BRIAN CLAGGETT
Production Managers

SHOP CREDITS

HUDSON SCENIC STUDIOS
Scenery and Automation

CHRISTIE LITES
Lighting Equipment

SOUND ASSOCIATES
Sound Equipment

CLARK TRANSFER
Trucking

BB PROP SERVICES
Production Prop Supervisor

J&M SPECIAL EFFECTS
Water Effects and Programming

LUVI FASHION CORP.,
JEFF FENDER STUDIOS,
GILBERTO DESIGNS &
TRICORNE INC.
Costume Construction



CHEF ART SMITH'S REUNION

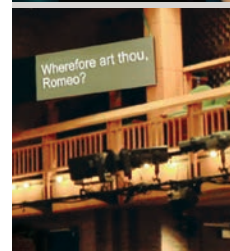
AT NAVY PIER

*"A sanctuary meant to send
you home with leftovers – not
just edible, but emotional."*

-CHICAGO TRIBUNE

REUNIONRESTAURANTS.COM
(312) 224-1415

Reservations • OpenTable



ACCESS SHAKESPEARE

Chicago Shakespeare Theater strives to make its facility and performances accessible to all patrons. You'll find our staff is ready to help in any way possible if assistance is required.



ASL Duo-
interpretation



Audio
Description



Open
Captioning

- Accessible parking
- Close to Pace Paratransit drop-off / pick-up
- Accessible seating

- Assistive-listening devices (binaural earbuds and induction neckloops for use with t-coil hearing aids)
- Large-print programs
- Braille programs

312.595.5600 • chicagoshakes.com/access

Staff

ARTISTIC & PRODUCING

PAIGE WHITSON-MARTINI
General Manager

BOB MASON
Artistic Associate/Casting Director

DANIEL J. HESS
Company Manager

AISSLIN FRANTZ
Associate Producer

ALEXIS TAYLOR
Casting and Producing Associate

JO ANN WOOLLEY
Executive Assistant and
Special Projects Manager

MERSEDEZ HOOVER
Assistant to the Creative Producer

TONY BONDOC
SADAF HABIB
DELANEY PIGGINS
Arts Leadership Fellow

EDUCATION

MARILYN J. HALPERIN
Director of Education
Ray and Judy McCaskey Chair

NORA CARROLL
Associate Director of Education

GRACE GRINDELL
Learning Programs Associate

MARKETING, COMMUNICATIONS, BOX OFFICE & GUEST SERVICES

JULIE STANTON
Director of Marketing and Sales

HANNAH KENNEDY
Director of Communications

EMMA PERRIN
Public Relations and Digital Media
Manager

DANIEL WALTERS
Marketing and Communications
Designer

MIKAYLA SHAW
Marketing Assistant

DEVIN FAUGHT
House Manager

PHOEBE SILVA
Assistant House Manager

SONJA PARDEE
Box Office Supervisor

BARBARA GAINES
Artistic Director
Carl and Marilyn Thoma Chair

RICK BOYNTON
Creative Producer

MICAH HAZEL
JOSHUA HOOTEN
JACK KILKELLY-SCHMIDT
AURTHUR KING
REILLY O'CONNELL
Box Office Associates

DANI BROWN
SAM CASTILLO
JAZ FOWLKES
ARIANA HOCKING
LEAH JOHNSON
MARCUS KUJAWA
OLIVIA LESLIE
PHILIP MACALUSO
JESSICA PLUMMER
JULIE RAVENSCROFT
ADDISON ROBERTS
ALEX ROSAS
MOLLY RUHL
ELIANA TIRONE
JADA WOODARD
Guest Services Associates

NATALIE BRANDY
CARSON MARA
TANNER MCCORMICK
JUSTINA ODEDINA
Concessioners

DEVELOPMENT & SPECIAL EVENTS

STEVE SOLOMON
Interim Director of Development

MAKEDA COHRAN
Events Director

MARTHA BANGIOLA
Associate Director of Development

KRISTEN CARUSO
Senior Development Manager for
Operations and Board Relations

AMANDA OWENS
Development Coordinator

KAELA WEST
Patron Relationship and
Data Coordinator

FINANCE & HUMAN RESOURCES

LINDA ORELLANA
Director of Finance

MONICA LANUM
Director of Human Resources

KATIE TRESNOWSKI
Controller

ALYSSE HUNTER
Assistant Controller

CRISS HENDERSON
Executive Director

KARA RIOPELLE
Managing Director

GIANNA SCHUETZ
Human Resources and Company
Management Coordinator

ALEJANDRA SUJO
Accounting Associate

PRODUCTION

CHRIS PLEVIN
Director of Production

ALEXA BERKOWITZ
Production Office Manager

ELISABETH SCHAPMANN
Production Office Assistant

STAGE MANAGEMENT

VICTORIA NAVARRO, AEA
Production Stage Manager

KELLY STILLWELL, AEA
Stage Manager

KALEIGH BERNIER, AEA
Assistant Stage Manager

ABIGAIL MEDRANO
Production Assistant

SCENERY

TYLER METROXEN
Stage Crew Head

BRADLEY BURI
Stage Crew Carpenter Head

JACK BIRDWELL
House Carpenter

HENRY BENDER
MEGHAN BOYLE
NICOLAS CABRERA
DANNY CARRAHER
CHRISTOPHER CULVER

JESS DEBOLT
JUSTIN FAIFER
DANIEL GREEN
JUSTIN GUTIERREZ
ANDY JOHNSTON

NICHOLAS KRUPPA
AIDAN MCBREEN
MYA PICCIONE
GREYSON SMITH
MORGAN TSAN
DOMINIQUE VATE
TABETHA WELLS
Carpenters

COSTUMES

CARYN KLEIN
Costume Shop Manager

CATHY TANTILLO
Costume Design Assistant

RYAN MAGNUSON
Costume Assistant

MAGGIE HOFMANN
Draper

ASH BERG
First Hand

JANELLE MANNO
Alterations Manager

YAS MAPLE
Stitcher

EMILY N. BRINK
Crafts

JENN GIANGOLA
Lead Dresser

LAURA HOLT
RACHEL S. PARENT
MADDI WEGRLARZ-WARD
Dressers

ELECTRICS

MAC VAUGHY
Lighting and Video Supervisor

ALEC THORNE
Assistant Lighting and Video
Supervisor

JOAN E. CLAUSSEN
Lighting Crew Head

BRENDEN MARBLE
RILEY WOODS
Spot Operators

ARIANNA BROWN
DUSTY BROWN
NICHOLAS CHAMERNIK
CLAIRE ANN CHESNE
NOAH GURIEL
RONEN ELMAN
CASSANDRA FENWICK
MOLLY GARRISON
MAXWELL HALPERIN
ANN HUERTA
KRYSTAL MARTINEZ
SMAIDA MASSATT
NATALIE MATTHEWS
MICHAEL McSHANE
RICHARD NOWAK
ISH PETERSEN
MEIKE SCHMIDT
Electricians

SOUND

NICHOLAS POPE
Sound Supervisor

DAN SCHRECK
Sound Crew Head

DAN SOLAN
Production Mix Engineer

DENNIS HUSTON
MACY KLOVILLE
Wireless Technicians

JAMIE DAVIS
DAVID GAUL
TYLER MALONE
ALEC MCCARTHY

FILIP PETERSEN
IAN SCARLATO
JESSIE SNYDER
MICHAEL STAFIEJ
Sound Crew

WIGS AND MAKE-UP

RICHARD JARVIE
Hair and Make-up Supervisor

ERIC DANIELS
PELLE MELIO
Hair and Make-up Attendants

PROPERTIES

ANNA KATHARINE MANTZ
Properties Supervisor

DAN NURCZYK
Properties Crew Head

CARRIE SHIN BABIGIAN
SARAH COLLINS
ANNAMAE DURHAM

SARA GROSE
AMBER HAHN
QUINN LEGGE
EVA BRETT TAYLOR MAHAN
TIFPHANY McCLINTON
DANIELLE MOYAL
EDEN SANDERS
WILSON YERXA
Properties Crew

FACILITIES & TECHNOLOGY

SUSAN KNILL
Facilities and Operations Director

JEANNE DEVORE
Technology Manager

KEVIN SPELLMAN
Technology and Innovation Specialist

DANIEL LOPEZ
Facilities Manager

FELIX ROSS
Custodial Manager

DWAYNE BREWER
KATRIA CLARK
ANTHONY DAVIS
BERNARD RICHARDSON
DIANE TURLEY
Custodial Assistants

CONSULTANTS & SPECIAL SERVICES

BAKER TILLY US, LLP
Auditor

MELISSA BERLINER
Fundraising Consultant—
Campbell & Company

**CRYSTAL
HENDRICKS-KRETZER**
Grant Writer—Campbell & Company

CAPTRUST
Investment Advisors

PJH & ASSOCIATES, INC.
Fundraising Consultants

KATHLEEN HECHINGER
Finance Consultant

JASCULCA TERMAN
Communications Consultants

CATHY TAYLOR
Public Relations Consultant

NORA K. LAWSON
Human Resources Consultant

**CULTIVATING BETTER
TOMORROWS**
IDEA Consultants

**UNIVERSITY OF ILLINOIS
OCCUPATIONAL HEALTH
SERVICES INSTITUTE**
COVID-19 Operational Consultant

**MEDICAL PROGRAM FOR
PERFORMING ARTISTS/
MARIA E. REESE, MD**
Medical Services

**AON PRIVATE RISK
MANAGEMENT**
Insurance Services

**HUGHES SOCOL PIERS
RESNICK & DYM, LTD**
KIRKLAND & ELLIS LLP
**MCDERMOTT WILL
AND EMERY**

NEVIN LAW GROUP, PLLC
SEYFARTH SHAW
Legal Services

ESTABAN AMARO (NIC/BEI)
SHEILA KETTERING (CI/CT)
ASL Interpreters

JASON HARRINGTON
Audio Describer

REGINA BUCCOLA, PH.D.
Scholar-in-Residence

STEPHEN BENNETT, PH.D.
KATIE BLANKENAU, PH.D.
CASEY CALDWELL, PH.D.
**ELIZABETH
CHABLEBOIS, PH.D.**
VANESSA CORREDERA, PH.D.
REBECCA FALL, PH.D.
SARA B.T. THIEL, PH.D.
Guest Scholar Lecturers

C2
Captioning Services

MICHAEL BROSILOW
JUSTIN BARBIN
LIZ LAUREN
MICHAEL LITCHFIELD
JOE MAZZA
CHUCK OSGOOD
VITO PALMISANO
JEFF SCIORTINO
JAMES STEINKAMP
Photographers

HMS MEDIA, INC.
CALVIN STEINKEN
Video Production

JOIN THE STORY

YOUR GIFT TO CHICAGO SHAKESPEARE

Supports World Premiere Musicals like *The Notebook*

Fuels fresh perspectives on Shakespeare
like last season's *As You Like It*

Engages students and teachers through
renowned education programs

...and so much more!



THREE EASY WAYS TO DONATE

- 📍 chicagoshakes.com/support
- 📞 312.667.4983
- ✉ Chicago Shakespeare Theater
800 East Grand on Navy Pier
Chicago, IL 60611

chicago
shakespeare
on navy pier **theater**

Institutional Contributors

Chicago Shakespeare Theater is honored by the support of these leading business and civic partners, whose generosity demonstrates a commitment to enriching our vibrant Chicago community. We are pleased to recognize these organizations for their dedication to artistic excellence, innovative approaches to enhancing education, and impactful community initiatives.

Reflects gifts received between July 1, 2021–August 1, 2022

GUARANTORS \$100,000 & ABOVE

BMO Harris Bank
Julius Frankel Foundation
The Shubert Foundation

BENEFACTORS \$50,000–\$99,999

Allstate Insurance Company	Illinois Arts Council Agency
Paul M. Angell Family Foundation	ITW
Bulley & Andrews	Kirkland & Ellis LLP
City of Chicago	The John D. and Catherine T. MacArthur Foundation
Embassy Suites Chicago Downtown	National Endowment for the Arts
Magnificent Mile and DoubleTree	Polk Bros. Foundation
Magnificent Mile	
Lloyd A. Fry Foundation	

SUSTAINERS \$25,000–\$49,999

Aloft Chicago Mag Mile	HMS Media, Inc.
The Boeing Company	Mazza Foundation
Helen Brach Foundation	Old National Bank
Chicago Shakespeare Theater Fund	Northern Trust
at The Chicago Community Trust	Peoples Gas Community Fund
ComEd, an Exelon Company	Prince Charitable Trusts
The Crown Family	Shakespeare in American
DCASE	Communities: National Endowment
Fifth Third Bank	for the Arts in partnership with
Food For Thought	Arts Midwest

PARTNERS \$10,000–\$24,999

Bartlit Beck Herman Palenchar & Scott LLP
 Elizabeth F. Cheney Foundation
 Exelon Corporation
 John R. Halligan Charitable Fund
 The Irving Harris Foundation
 KPMG LLP
 Madison Dearborn Partners

Mayer Brown LLP
 Newcastle Limited
 Ropes & Gray LLP
 Skadden, Arps, Slate, Meagher & Flom LLP
 William Blair
 Wintrust
 Anonymous

\$5,000–\$9,999

American Express
 Latham & Watkins
 Perkins Coie LLP
 Dr. Scholl Foundation

Charles and M. R. Shapiro Foundation, Inc.
 Anonymous

\$1,000–\$4,999

Ariel Investments, LLC
 JCCC Foundation

Kovler Family Foundation
 National Alliance for Musical Theatre

Shakespeare Society

Members of the Shakespeare Society provide vital annual support to sustain Chicago Shakespeare Theater's mission. The commitment of these steadfast individuals helped to build a home for Shakespeare in Chicago that has endured for more than three decades. We are deeply grateful for their extraordinary investment in the Theater's guiding principles to serve as a cultural leader, citizen, and ambassador for our city.

Reflects gifts received between July 1, 2021–August 1, 2022

\$100,000 & ABOVE

Rita and John Canning
 The Kenneth C. Griffin Charitable Fund
 The Jentes Family
 Lindy and Mike Keiser
 Ray and Judy McCaskey
 Peter and Alicia Pond

Burton X. and Sheli Z. Rosenberg
 Patrick G. and Shirley W. Ryan Foundation
 Carl and Marilyn Thoma
 Donna Van Eekeren
 Anonymous

\$50,000–\$99,999

Joyce Chelberg
 Neal and Jennifer Reenan
 The Segal Family Foundation

\$25,000–\$49,999

Andy Atlass
 Julie and Roger Baskes
 Cate and Jim Denny
 Eric's Tazmanian Angel Fund
 Greg Gallopoulos
 The Gerst Family
 Brenda and James Grusecki
 Vallie and Frederick Henry
 Kimberlee S. Herold
 The Family of Jack Karp
 John and Judy Keller
 Judith Loseff
 Linda and Dennis Myers
 Christopher and Erin O'Brien

Dennis and Stella Olis
 Matthew and Gloria O'Meara
 Mark Ouweleen and Sarah Harding
 Sheila Penrose and Ernie Mahaffey
 Richard W. Porter and Lydia S. Marti
 Reid-Anderson Family Fund
 John W. and Jeanne M. Rowe
 Steve and Robin Solomon
 Harvey and Mary Struthers
 Bill and Char Tomazin
 Pam and Doug Walter
 The Wesselink Family Foundation
 Elizabeth Yntema and Mark Ferguson
 Anonymous



CREATE A GREATER IMPACT

Many organizations actively contribute to causes that improve the communities where their staff live and work. **Contact your employer today to learn about their matching gift initiatives.**

Questions? Contact development@chicagoshakes.com or call **312.667.4983**

Individual Contributors

Thanks to the contributions of CST's family of donors, we can continue to create extraordinary work on stage, in schools, and across our city. Annual donations offset the substantial expense of producing theater of uncompromising quality and ambition. In recognition of the enhanced level of support provided by our Bard Circle donors of \$1,000 or more, CST provides exclusive privileges and behind-the-scenes access.

Reflects gifts received between July 1, 2021–August 1, 2022

BARD CIRCLE AMBASSADORS \$10,000–\$24,999

Brayton and Pim Alley
Mary and Nick Babson
Frank and Kathy Ballantine
Barnard-Fain Foundation
Shaun and Andy Block
Andrew and Amy Bluhm
The Brodsky Family
Thomas L. and Cairi S. Brown
Marion A. Cameron
Richard and Ann Carr
Tuey and Karen Connell
Kent and Liz Dauten
John P. Davidson and
Shirley A. Schaeffer
Mr. and Mrs. Craig J. Duchossois
Brian and Yasmina Duwe
Jeanne Ettelson
Joan and Kevin Evanich
Mary and Paul Finnegan
Jim and Karen Frank
Mardi and Patrick Hackett

Joan M. Hall
Hill and Cheryl Hammock
David Hiller
The Jaquith Family Foundation
Ronald B. Johnson
Chase Levey
Michael Charles Litt
The Madden Family Fund at
The Chicago Community
Foundation
Larry and Mary Mages
Susan Manilow
Steve and Peggy McCormick
Andrew and Joan McKenna
Foundation
Mr. and Mrs. James F. Miller
Barbara Molotsky
Corinne Morrissey
Mike and Adele Murphy
The Nayar Family Foundation

Margaret Norman and
Gerald Vladimer
Dr. Martha Nussbaum
Connie and Don Patterson
Michael Payette
Jim and Molly Perry
Barbara Petersen
Paulita Pike and Zulfqar Bokhari
Nazneen and Sal Razi
Judy and David Schiffman
The Ilene and Michael Shaw
Charitable Trust
Jennifer Steans and
Jim Kastenholz
Sandra Sweet and
Mira Frohnmayer
Cate and Frederick Waddell
Ray and Donna Whitacre
Ronald and Geri Yonover
William R. Zimmer, M.D.
Anonymous (2)

BARD CIRCLE FELLOWS \$5,000–\$9,999

Jane Ambler
Carey and Brett August
Pat and Laura Barrett
Kate Blomgren
Frank Bozich
Barbara and Jim Bronner Fund
of the Yampa Valley
Community Foundation
Binta Brown
Clive and Nicola Christison
Patrick Richard Daley
Anne Megan Davis
The Dombalagian Family
Dr. and Mrs. W. Brian Duffy
Dorne and Stephen Eastwood
John Edelman and
Suzanne Krohn
La and Philip Engel
George Engeln and
Denise Stewart
Andrea and Craig Farestveit
Nancy Palm Felton-Elkins
Barbara Franke
Frankel Family Foundation
Barbara Gaines

William and Anne Goldstein
Karen Z. Gray-Krehbiel and
John H. Krehbiel
Timothy and Lyn Hannahs
Kathryn Hayley and
Mark Ketelsen
Elizabeth Hogan and Louis Chan
Holson Family Foundation
Stewart Hudnut
Hurckes Family Foundation
Stacie Immesberger
Kirk and Cheryl Jaglinski
Jen and Brad Keck
Ms. Krystyna Kiel and
Mr. Alexander Templeton
Sanfred and Nancy Koltun
George and Roberta Mann
Renetta and Kevin McCann
Michael McCaslin and
Patrick Ashley
Heather McWilliams and
Fred Fischer
Amanda and Jess Merten
Mr. and Mrs. Lee Oberlander
Charles and Susan Patten

Pritzker Traubert Foundation
John and Colette Rau
Richard Rosenberg
D. Roskin
Deborah and Jeffrey S. Ross
Patricia and Gregory Samata
Dr. and Mrs. James Scheffler, M.D.
Patricia and David Schulte
Jill and Mike Severino
Kenneth Sharigian
Michael and Linda Simon
Dick Simpson
Richard Smart and Sheila Owens
Bill and Orli Staley
Penelope R. Steiner
Philip and Becky Tinkler
John and Maribeth Totten
Donna Welch
Whiting Family Foundation
Stuart and Diana Widman
Susan and Bob Wislow
Anonymous (2)

BARD CIRCLE PATRONS \$2,500–\$4,999

Mike and Mary Baniak
Leslie and Bill Barker
Janice and Philip Beck
Daniel and Michele Becker
Diane and Mike Beemer
Ms. Lynne Blanton
Mr. & Mrs. Norman Bobins,
The Robert Thomas
Bobins Foundation
Catherine and Jeffery Cappel
Edward Caveney
Robert A. and Iris J. Center
Bill and Alexandra Cole
Mary Ann Cronin
Keith S. Crow and Elizabeth
Parker Crow
Nancy Dehmloew
Amina Dickerson
Tom and Joleen Dimond
Philip and Marsha Dowd
Dr. and Mrs. James L. Downey
Kathy Dunn
Nellie and Sheldon Fink
Peter Fischer and
Joanne Roddy Fischer
Dr. Willard Fry
The Gerlits Family Fund
Ethel and Bill Gofen
Jim Goodridge and Joan Riley
Linda D. and Craig C. Grannon

Sue and Melvin Gray
Dorothy Harza
Mark C. and Judith U. Hibbard
Jim and Mary Houston
Leland Hutchinson and
Jean Perkins
Nancy and Christopher Johnson
Lynn and George Jones
Judith L. Kaufman
Daniel and Gloria Kearney
Peter and Stephanie Keehn
Jay Krehbiel and Silvia
Beltrametti
Liam and Karen Krehbiel
Philip Lesser, PhD
Diane and Bill Lloyd
Jim and Kay Mabie Family
Michael and Anne Malone
Stephen D. and
Susan Bass Marcus
McCabe Family Foundation
Mr. and Mrs. Gregory Melchor
Kate Miller
Milan Mrksich
Margaret Edith Murphy
Sarah and Wallace Oliver
Mr. and Mrs. Norman Olson, Jr.
Dr. John O'Toole and
Dr. Kristin Walter
Mr. and Mrs. Bruce Ottley

Andra and Irwin Press
Jeffrey Puglielli
Lynne and Allan Reich
Michael and Christine Rice
William and Cheryl Roberts
Ann and Robert Ronus
Bruce Sagan and Bette C. Hill
April and Jim Schink
Maryellen and Thomas Scott
Louis and Nellie Sieg Fund
Craig Sirls
Julia Smith and Ira Bodenstein
Ned Stebbins
Stan and Kristin Stevens
Kimberly K. Taylor
Christopher M. Thomas
Anne C. Tobey
Dan and Patty Walsh
Albert and Sherrie Weiss
Mr. Chad Williams and
Dr. Amy Williams
Duain Wolfe
Jack and Goldie Wolfe
Miller Fund
Jeffrey and Claudia Wood
Steve and Arna Yastrow
Ann Ziegler
Anonymous (2)

BARD CIRCLE PARTNERS \$1,000–\$2,499

Richard and Janice Aaron
The Adams Family
James and Sheila Amend
Gregg and Karen Anderson
Judith and Harold Anderson
Robert C. Anderson
Bob and Lynn Arensman
Peter and Lucy Ascoli
Marlene Bach
Edgar H. Bachrach
Wade and Rebecca Bacon
Richard K. Baer, M.D. and
Carol Hirschfield
The Baila Foundation
Susan and Stephen Baird
Pamela Baker
Lauren and Rick Barnett
Sandra Bass
Gregory Batton and
Carol Constantine
Martin and Jill Baumgaertner
Rick and Deann Bayless
Mary Beaubien
C. Bekerman, M.D.
Linda Finley Belan and
Vincent William Kinehan
Bruce Bellak
Andrea Billhardt
Richard and Heather Black
Frances and Ed Blair
Philip D. Block III Family Fund
at The Chicago Community
Foundation
Mr. and Mrs. Abram Bluestein
Fred and Phoebe Boelter

Herbert Boynton
Paul and Sue Brenner
Peter and Kathy Bresler
Robert and Joell Brightfelt
Dirk Brom and Kim Russel
Douglas R. Brown and
Rachel E. Kraft
Buchholz Donor Fund
Alan and Mary Alyce Blum
Linda Buckley
Sandy and Ed Burkhardt
Anne Cadigan
Ed Calkins
Janet Carl Smith and Mel Smith
Kenneth and Harriet Carlson
Patricia Carlson
Ms. Laurie Chaiten
Margo and Maurice Champagne
Rowland Chang
Jane Christino and
Joseph Wolnski
Rev. Dr. Jane A. Clark and
Mr. Michael A. Clark
Timothy and Theresa Coburn
Jane Colman
Joel and Katie Cory
Bob and Chie Curley
Char and Larry Damron
Judy and Tapas K. Das Gupta
Wilma and Michael Delaney
Mr. Paul Dengel and
Ms. Paula J. Morency
William DeWoskin and
Wendy S. Gross
David and Eileen Donnersberger

Carole and Peter Doris
Kimberly Douglass
Ingrid and Rich Dubberke
Michael and Debra Duffee
Drs. George Dunea and
Sally Dunea
Barbara and John Eckel
Robert Edger, M.D.
Kitty Egan - F.J. Zimmermann
Foundation
Melanie Ehrhart
Patti Eylar and Charlie Gardner
Jeff Farban and Ann Greenstein
Fielek Family
Henry and Frances Fogel
Foley Family Foundation
Amanda Fox
Willard and Anne Fraumann
Judith R. Freeman
Judy and Abel Friedman
J. Patrick and Anne M. Gallagher
Sean and Susan Gallagher
Denise Michelle Gamble
Ann Gardner and
Irene Wasserman
David and Tracey Gau
Joseph P. Gaynor and Victoria
Poindexter
Stephen and Elizabeth Geer
John Gilligan
James J. and Louise R. Glasser
Honey Lynn Goldberg
Joan Golder
Dr. Barry Goldman and
Victoria Weisenberg

JOIN THE BARD CIRCLE TODAY!

Membership provides you with personal ticketing service and access to exclusive content and events throughout the year.

By making a leadership gift of \$1,000 or more, you can directly support our extraordinary artmaking and work throughout our community.



Questions? Contact **Martha Bangiola** at mbangiola@chicagoshakes.com

Bard Circle Partners (continued)

Donald and Jane Gralen
Jennifer Haar
Mary E. Hafertepe
Jeffrey Hall, Bartlit Beck LLP
Marcia and Glenn Harer
Mark and Lori Harris
Dr. Robert A. Harris
Marty Hauselman
Heestand Foundation
Christie Hefner
Ross C. and Andrea Heim
Mary Ellen Hennessy
Hamilton and Traci Hill
Donald E. Hilton and John Buscemi
Denise and Adam Hoeflich
James and Deborah Hopkinson
Karen and Tom Howell
Hubbard Family Fund
Mr. and Mrs. Stephen G. Huels
Patricia J. Hurley
Ituen Aim to Thrive Foundation
Pam and Paul James
Dr. Julie and Mr. William Jastrow
Donald and Susan Jeffers
Mr. John Jendras and Ms. Judith A. Paice
Jerry and Karen Johnson
Randee and Vance Johnson
Dr. Abhilasha Jones
Peter H. Jones and Marian Percy
JS Charitable Trust
Ms. Susan M. Junkroski
Kathryn and Bill Kerr
Jane and Paul Klenck
Paul and Raye Koch
Erica and Frank Kuhlmann
Michele Kurlander
Patrick R. Lagges
Frederic S. Lane
Ed and Mary Langbein
Bradley Larson
Lew and Laurie Leibowitz
Joanie and Richard Leopold
Barry Levenstam and Elizabeth Landes
Judy and Stephen Levin
Mark Levine and Andrea Kott
Carol and Chris Lind
Jane and Richard Lipton
Veronica Lynch
Charlene and Gary MacDougal
Jolie Macier and James Niehoff
Paula and Jeffrey Malak
COL Gregg Malicki
Helen Marlborough and Harry Roper
Faye Marlowe
Roland and Adele Martel
Doretta and Robert Marwin
Charles Mauter
Donald Maves
Judy and John McCarter
Dr. William McMillan and Dr. Jane McMillan
Terry J. Medhurst
Helen Melchior
Martha and Richard Melman
Dr. Janis Mendelsohn
Tim Michel and Amy Laiken

Loren R. Miller III
Dr. Marilyn Mitchell
Beverly Moody
Rick and Joyce Morimoto
Heather Morrison
Catherine Mouly and LeRoy T. Carlson, Jr.
Mr. J. Thomas Mullen
Charles and Vida Murray
Patricia R. McMillan and John Nagy
Mary Nair
Natalie Nesbitt
Dr. Kent Nickell
Hope G. Nightingale and David Ellis
Zanna and Aram Nikitas
Janis W. and John K. Notz, Jr.
Susan B. Noyes,
Make It Better Media
Julian Oettinger
Barbara and Daniel O'Keefe
Daniel O'Neill
Jonathan F. Orser
Harper Pack
Ronna Page
Drs. Allen L. and Georga Parchem
Robert K. Parsons and Victoria J. Herget
Wendy and Hank Paulson
Brent and Marina Payne
Jason and Jackie Peltz
Theodore and Harriette Perlman
Ronald Piela and Lyneta Grap Piela
Karen Pierce and Carey Weiss
Joe Piszczor
Michael and Christine Pope

Lisa S. Portnoy
Linda Prasil and John Rank:
Go Shakespeare!
Dr. and Mrs. Richard A. Prinz
Mark and Nancy Ratner
Libby and Dan Reimann
Peggy and Phil Reitz
Robert J. and Barbara A. Richards
Louise Robb
Ed Roob
Yumi and Douglas Ross
Jennifer Ross
Joseph O. Rubinelli, Jr.
Eric and Sandy Ruskoski
Angelique A. Sallas, Ph.D.
Bettylu and Paul Saltzman
Nancy and Jon Schindler
David and Stephanie Schrodt
Erich and Judy Schwenker
Judy and Thomas Scorza
Kelly Scott
Shauna Scott and J. Parker Hall, IV
Barbara H. Scudder
James M. Sears
Sekhar Family
Jan and Emanuel Semerad
Andrew H. Shaw and Martha A. Peterson Charitable Fund
Charlotte Stepan Shea
Siegel Altman Charitable Fund
Jack Siegel and Evelyn Brody
Bonnie and Don Slavicek
Chuck Smith
Richard and Nancy Spain
Deborah Spertus

David and Ingrid Stallé
Sue E. Stealey
Cheryl Steiger and Kevin Noonan
Carol D. Stein and James S. Sterling
Nancy and Bruce Stevens
Janet Surkin and Robert Stillman
Eric Q. Strickland
Lois and Richard Stuckey
Linda J. Swanson
Dr. James V. Talano
Susan C. Taylor
Stephanie and John Tipton
Frank and Janis Tomecek
Joanne Troutner
Gary Tubb
Henry and Janet Underwood
Anne Van Wart and Michael Keable
Ms. Henrietta Vepstos
Clark and Joan Wagner
Mary Kay Walsh
Roberta and Robert Washlow
David Wasserman, M.D.
Jeff and Paula Waterman
Jim and Mary Weidner
Linda and Michael Welsh
P. Wheeler
Steve and Bonnie Wheeler
Lisa and Randy White
Diana Williams and Stephen Spigel
The Winsor Family
Virginia Yarrow
William Ziemann
Anonymous (4)

COLLEAGUES \$500-\$999

Jonathan Abarbanel
Richard J. Abram and Paul Chandler
Elizabeth Albert Bloom and Daniel Albert
Margery Al-Chalabi
Philip Alphonse
Jill Althage
Steven M. Antholt
Doctors Andrew and Iris Aronson
Sharon and John Baldwin
Mr. and Mrs. Thomas J. Bax
Judith Baxter and Stephen Smith
Mr. and Mrs. John and Margie Bennecke
Dave and Nicole Berger
Joan Israel Berger
Jeanette A. Biava
Barbara A. Boyer
BJ Braun
Richard H. Brewer and Mary Ann Schwartz
Joey Buck
Mr. Jack Buoscio
Brian Burrows
John Byrd
Peg Cain
Michael Camp
Edward Casmere
Virginia R. Cassidy

Larry and Julie Chandler
Thomas E. Chomicz
Susan Coaker
Marvin R. Cohen and Jane E. Richman
George and Minou Colis
Ms. Nancy Raymond Corral
Katherine Hutter Coyner
Hon. Barbara Flynn Currie
Ellen and Jim Dalton
Marilyn Darnall
Raye-Ann Deregner
Darren Diehm
Patricia and Leonard Dominguez
Wendy Doniger
Leslie Douglass
Scott Enloe
Elizabeth Ester and Michael Brody
Patricia Ewers
Terry and Judith Feiertag
Timothy Frederick
Sharon Fritz
Richard Furnstahl
Joan A. Gall
Bryna and Edward Gamson
Cara Gaziano and Stuart McDermott
Mr. Paul Gearan
Lolly and John E. Gepson

Arlene and Camillo Ghiron
Patricia and James Gladden
Jaye and John Golanty
John F. Gordon and Bill Salvato
Suzanne Gossett
Silvia and Tim Grabacki
Deborah and John Grobe
Ada Mary Gugenheim and Jon N. Will
Joseph R. Hanley
George and Susan Heisler
WM. Carlisle Herbert
Karen and Paul Hoelscher
Charitable Fund
Professor and Mrs. Clark Hulse
Jennifer and Brad Ilko
Jeffrey Jens
Richard K. Johnson and Marybeth Dougherty
Russell N. Johnson and Mark D. Hudson
Patricia and James Jurgens
Joan Kacmar
Brian Kelly and Lauren Anderson Kelly
Ms. Emily Kessler
Dennis Klug
Lisa Kohn and Harvey Nathan
Electra D. Kontalonis
Amy Kovalan and Edward Kerros

Colleagues (continued)

Susan Kovic
Judy and Perry Kozicki
MacDonald Action Foundation
Ed and Linnea Martin
William Mason and Diana Davis
Steve and Lynn Mattson
Alisha and Alan McCloud
Claretta Meier
Dana Mikstaf and
Ronna Hoffberg
Judy Mischel and Jeff Horvitz
Fran Moeckler
Benjamin Montague
Lisa Montelpasse and
David Shepherd
Dr. and Mrs. Mark D. Mrozinski
Luvie and Scott Myers
Kimberly Ormsby Nagy
Nicolas H. Nelson
Mr. and Mrs. Anthony J.
Nocchiero
Mr. Bernard Nusinow
Bill and Penny Obenshain
Lezlie and Bill O'Donnell, Jr.
Christine Oliver
David and Mary Jo Orkowski
Jim and Sharon O'Sullivan

George and Peggy Pandaleon
Jill and Geoffrey Parker
Naomi and Ron Parrella
Simeon Peebler and
Kirsten Bedway
Peggy Pendry
Bruce and Susan Peterson
Charles and Mary Philips
Jennifer Pinto
Norm and Helene Raidl
James and JoAnne Rankin
Ms. Linda Reinert
Dr. and Mrs. Ralph W. Richter, Jr.
Ned and Cookie Robertson
Bryon Rosner and Martha Roth
Maija and Jay Rothenberg
Sherri Ruppel
Robin Russo
Cynthia Safford
Richard and Susan Sanders
David and Nancy Sarne
and Family
Mary Ann and Bob Savard
Marie-Claude and Peter Schauer
Richard and Betty Seid
Liz and Jeff Sharp
John and Kay Shaw
Anna and Mark Siegler
James and Mary Jo Slykas

Richard Smith
Kathleen and Brian Spear
Kathleen Steffen and Steve Wirth
Heather and Randy Steinmeyer
Sylvia and Joe Stone
Thomas Sullivan
William and Heidi Swiss
Jerry Szatan and
Katherine Abbott
Joanne Tremulis
Martha Trueheart
R.P. and Denise Turcotte
Liat and Tali Tzur
Marilyn & Michael Vender
Todd and Sharon Walbert
Rev. Mark J. Walter
Richard and Karen Weiland
Mrs. Henry P. Wheeler
Carol Williams
Gary and Modena Wilson
Debra and Richard Winer
Vicki J. Woodward and
John J. Glier
Nancy Wulfers
Diane Yarrow
Philip and Virginia Yarrow
Jamie and Richard Zelman
John and Linda Zimnie
Anonymous (7)

James L. and Alice Reno Malone
Mary Ann and Dennis Marks
The Masters and Pence family
Morris Mauer
Ms. Mary T. McAuliffe
Scott McCausland
Ms. Marsha McClellan
Maureen McIntyre
Christopher Melby
Todd and Linda Morning
Colleen Mulcahy and Nick Hatzis
Timothy and Janet Murtaugh
Ms. Barbara A. Murtha
Mr. Doug Newkirk
George and Paula Noble
Sherry K. Nordstrom and
David Weindling
Álvaro Obregón
Linda O'Bryant
Ms. Karen O'Malley
Martha Pascal
Audrey L. Paton
Thomas Pawlik and Ava Cohn
Elyse Pearlman and
Brad Teckenbrock
Donald E. Penn
Daniel and Barbara Perry
Rebecca and David Perry
Lindsey and David Peters
Melanie and Daniel Peterson
Rita Petretti
D. Elizabeth Price

Chris and Elizabeth Quigg
Adele Rapport
Pradeep and Taposhree Rattan
Mr. and Mrs. Richard Redmond
Mr. and Mrs. Myron J. Resnick
Marilynn and Charles Rivkin
Warren Rodgers Jr.
Dorothy Ellen Romberg
Mary Rooney
Katherine Rose
Alan and Debra Rosenberg
Sidney and Alexandra Roth
Heidi S. Rothenberg
Bonnie Fry Rothman and
Michael Rothman
Susan Salay
Marci Sheele
Rosa Schloss
Rose Schmidt
Barbara and Lewis Schneider
Don and Polly Schwartz
Will Schwarz and Nancy Grace;
Sam, Anna and Nate Schwarz
Todd and Susan Semla
Linda Severin
Marilyn Shipley
June Hill Shulman
Mac and Joanne Sims
Robert Six
Geri and Randy Smith
St. Crispin Society
Gerald and Mary Stapleton

Jo Ann Stevenson
Doug and Betsy Stiles
Ms. Lisa Stracks
Mr. G. Ralph Strohl and
Dr. Minalini Rao
Peter and Marilyn Tantillo
Joseph and Dahlia Teshar
Sue and James Thompson
Karen Hletko Tiersky and
Myron Tiersky
Laura Tilly and Derek Cottier
Carl and Karen Tisone
Ms. Laura Torphy
Ms. Rebecca Tung
Mary Kay Tuzi
Mr. and Mrs. Peter Van Nice
Ronald and Barbara Vavrinek
Anna Mary Wallace
Ms. Amy Waters
Victor and Tamar Weissberg
Mary and Ronald Whitaker
Charles A. and Jeanette White
Barbara Whitman
Priscilla Wilkins Stevens and
Timothy Stevens
Ms. Barbara Wing
Ann Wise
Julie Yamaguchi
Edward J. and Janice Zulkey
Anonymous (8)

FRIENDS \$250-\$499

Tom and Ann Alexander
Doris Elizondo Alvarado
Mary and Terry Anderson
Susan Arnold
Linda Baker
Peter T. Bandelow
Sheila Barton Bosron
Susan and Don Belgrad
Lee and Kathryn Benish
David Joseph Benn
Roy C. Bergstrom
Noel and Shirley Biery
Patrick Bitterman
Barbara J. Blair
Nancy and Bernard Blayer
Dorothy and William Blyth
Sharalyn Borchers
Rob and Rose Bouman
Robert and Susan Bowker
Linda and Terry Brown
Patricia P. Buckler
Laura Budde and Erik Lindstrom
Marcia and Gerald Burke
Helen Carlock
Robert and Judy Chalberg
Timothy Chapman
Ms. Cynthia Cheski and
Rev. Scott Elliott
Deborah and John Chipman
Jim and Bridget Coffing
Dr. James and Mrs. Susan Cohn
Ms. Claire Concannon
Kim and Vera Cory
Corey Crain
Jeffrey G. Cribbs
Patrick Daw
Guy H. DeBoo
Samantha Dekoven

Joseph Ditoro
Sue Donoghue
Doctors Deirdre Dupré and
Robert Golub
Thomas and Martha Dwyer
Dr. Steven Edelstein
Susanna and Helmut Epp
Linda C. Fairbanks and
Jeanne DeVore
Elizabeth Fieweger
Mr. and Mrs. Gregory Fisher
James and Leslie Foster
Timothy and Janet Fox
Martin Friedman and Peggy
Casey-Friedman
Stephen and Helene Gabelnick
John and Joanne Gallagher
Donn and Barb Gardner
Les and Katrina Garner
Susan Mabrey Gaud
Andrea and Richard Ginsburg
Mr. and Mrs. Norman Gold
Steve Goranson
Michael and Amy Gordon
Ms. Norma Gordon
Marilyn and Tim Grodrian
Joe Guthridge
Carol and Solomon Gutstein
Robert J. Haber
Craig and Fern Hahn
Dr. and Mrs. Theodore Handrup
Judith Hanlon
Boyd and Janis Harman
Kathy Harrington
Charles Harvey
Kim Hedlin
James and Mary Jo Henegan
Leslie Hickey

V.E. Hicks
Robert A. Hill and Thea K. Flaum
Sherry and Arnold Hirsch
Gail Holmberg and Henri Gillet
James W. Hoover
Susan K. Horn and
Donald S. Honchell
Deborah Horwitz
Gene Hotchkiss
Mrs. Melanie Hummer
Heather Ingraham
Trent Johnson
Harriet and Ernest Karmin
Dr. Susan Keckskes
Susan Kern, M.D.
Thomas and Margaret
Kittle-Kamp
Paul Kobasa
Greg and Carol Korak
Lottie Kowalski
Kevin A. and Joanne C. Krakora
Ms. Suzanne Labelle
Angela Lane
Jim and Laurel Lannen
Jason Laurie
William and Blair Lawlor
Margaret Lenahan
Mary and John Lesch
Laurie and Marshall Levine
Elizabeth Lewis
Joan Lieb
Mr. David P. Lloyd and
Ms. Suzanne Williams
Vicky M. Longawa
Melvin Lopata
Wayne and Kristine Lueders
Deborah and Karl Lust
Carol Ann Macola

ASSOCIATES \$150-\$249

Abbvie, Inc
Mark Aghakhan
Steve Alleyne
Steven Andersson
M. Barnes
Mary and Alex Bart
Mr. and Mrs. Scott Baskin
Andrea Bauer
Deborah Baughman
Anne and Steve Beatty
Ms. Gail Bedessem
John Bernstein
Elizabeth Berry
John and Kathy Biel
John Blane
Dennis and Sharon Blevit
Hendrix and Kim Bodden
Ms. Maria Boehm
James and Sharon Borg
Michael Bradie
Michael Brazier
Allison Brustin and Lisa Groff
Elevene M. Bryant
Dr. Regina Buccola
Howard and Moira Buhse
William and Helen Burns
Amy and Jeff Cardella
Marilyn Carle
Virginia Carlson
Michael B. Carsella
James Cavanaugh
Mary Jane Chapman
Georgia Cibul
Cohen and Hacker
Architects, LLC

Caroline P. Cracraft
Mr. Stephen Crilly
Joni Croll
Ms. Linda Crowder
C. Bryan Daniels
Sue and Kent Davis
Cory Dehnee
Sheila Dorsey
Ms. Mary Dougherty
Tom Doyle
Timothy Duggan
Mr. Kenneth East and
Mr. Timothy Thurlow
Edith and Gerald Falk
Claudia Fegan
Carol Fessenden
Jane Fleming
Marcia L. Flick
Bob and Claire Gadbois
Marilynn Gardner
Susan Gault
Dr. Richard Glinka
Beverly and Geoffrey Grambau
Ms. Melissa Greenberg and
Mr. Brian Gray
Ginny and Bob Grecco
Catherine Griffin
Mary M. Grobarcik
Merle K. and Barry Gross
Robyn and David Grossberg
Wendy Grossman
Guy and Joan Gunzberg
Narmina Guseynova
Michael Hansen and
Nancy Randa

Christopher A. Harris
Linda Hart
Corinne Heath
Judy and Larry Hedges
Jean Hellman Ryan
Ms. Katherine M. Henrici
Suzanne High
Cheryl and Richard Hiipakka
Phyllis Hill
Harold Hirsch
Aaron Hoffman
Nancy and Michael Hogg
Steve Iammartino
Dr. Carol Ivy
Judy Jackson
Jim and Jackie Jepsen
Mary Johns
Esta Kallen
Mary Jo Kanady
Mike and Jane Kathman
Dr. Claudia Katz
Stuart Katz and Keith Erickson
Brian Kelly
Peter Kempfer
Carla and Michael Kennedy
Robert Kennedy
Charles and Donna Kitchen
Matt and Karen Klickman
Mr. Martin Knott
Jason Kolberg
Ms. Phyllis Kopriva
Barbara Koren
Shari Kouba
Fran Kravitz
John Kreuser

Associates (continued)

Judith Krieg
 John L. Ladle, Jr.
 Joseph and Kerstin Lane
 Mr. and Mrs. Jeff Leicht
 Jacob Lesgold and
 Kristina E Rice
 Veronica Levine
 Ellen Frell Levy
 Mary E. Lincoln
 David and Carol Liner
 Melvin Loeb
 Ms. Kerry Long
 Mr. Jeff Lowitz
 Dr. Rosemary Lucas
 Mr. Scott MacGregor
 Robin and Henry MacMorran
 Jane Malherbe
 Sharon Manuel
 Bonnie Ansborg Marshall
 Roderick and Yoshie McIlquham
 John and Etta McKenna
 Sharon and Herb Meltzer
 Gicel Mercado
 Daniel Meyer
 David C. and Patricia A. Meyer
 Anne Michuda
 Patricia M. Milroy
 Gina Miski
 Kim Mitchell
 Michelle Montroy
 Mr. and Mrs. P. Morris
 George Morrissey
 Dr. Martin Mozes
 Rev. Harold B. Murphy
 Mary Ellen Murphy
 Lewis Nashner
 Joan Nemickas
 Kristin Nickels
 Matthew and Virginia Noble

Jerry and Geraldine Nolen
 Mary Alma Noonan
 Ms. Mary Olsen
 Candus S. Olson
 Neal and Mary Clark Ormond
 James E. Orr
 James Padgett and
 Rosanne Fitko
 Lyn and Joe Page
 Kristi Pagoulatos
 Pat Pappas
 Edmond Parker
 Ken and Maria Peterson
 Nick Petros
 Joann Podkul
 Marlan Popovich
 Nancy Putnam
 Michael Querfurth Family
 Susan Rabe
 Dorothy Victoria Ramm
 Thomas and Donna Ray
 Marilyn and Guy Revesz
 Alicia Reyes
 Karen Rezny
 Robert Rifkin
 Mr. and Mrs. Norman A. Robins
 Jean Robinson
 Bernie and Judy Rosenstein
 Gracemary Rosenthal
 Judy L. Rowe
 John Russick
 Jim and Noreen Ryan
 Andria Sandora
 Alfred and Linda Saucedo
 Lawrence D. Schectman
 Bonnie and Roger Schmidt
 Lynn Schornick
 Susan H. Schwartz
 Naomi and Jerry Senser
 Karen B. Shank and Toby Lange
 Bruce and Sarane Siewerth

Lewis and Ellen Smith
 Eric Sorensen
 Adena P. Staben
 Lenette and John Staudinger
 Mr. James J. Stevens
 Ruth Stevig
 Maryanne and Lee Stone
 Carol A. Stuke
 Ms. Colleen Sullivan
 Mr. and Mrs. James E. Sullivan
 Mary and Kenneth Sullivan
 Louise Sunderland
 Kate and Jay Swift
 Alida Szabo
 Paul and Linda Thistlethwaite
 Joan and Kenneth Thompson
 Mr. John H. Tielsch and
 Mrs. Deborah Garber
 Ms. Mary Toll
 Alice Toth
 Robert Traven
 Cheryl Trudeau
 Debra Umhofer
 Dominick Vetrano
 Andrea and Jerry Vigue
 Richard Vitkus
 Jerry Warren
 Cynthia Weglarz
 Patricia and Michael B. Weinstein
 Steven Welton and Tamara Horn
 Patricia Wess
 Kathy Wilders
 Diane P. Wood
 Amy Woodworth
 Bruce W. Worthel and
 Barbara G. Young
 Ruth N. Wukasz
 Jean W. Yale
 Janice Ziebka
 Mr. and Mrs. Mike Zolik
 Anonymous (5)

Tribute Program

An honor or memorial gift is a distinctive way to honor the memory of friends and family or pay tribute to milestone celebrations. For more information regarding this program, please contact the Development Office at development@chicagoshakes.com or 312.667.4983.

Reflects gifts received between August 1, 2021–August 1, 2022

MEMORIAL GIFTS

SARAJANE AVIDON AND
 FELIX SHUMAN
Dick Simpson

JUDITH MARIE BERGAN
James M. Sears

JOHN R. BLAIR
Barbara J. Blair

DR. ALICE BRANDFONBRENER
*Mark and Kathleen
 Brandfonbrener*

DOUG BRIS-BOIS
The Brodsky Family

LILLIAN BRULC
Wileen Dragovan

CHARLES CAMPBELL
Margaret Edith Murphy

LOIS DUNN
Kathy Dunn

HARVE A. FERRILL
William and Anne Goldstein

ARLENE FIELDSTEEL
V.E. Hicks

JACK FULLER
Anonymous

ANDREA GUNDERSON
Anonymous

JULIE AND PARKER HALL
*Shauna Scott and
 J. Parker Hall, IV*

DONA HENDERSON
Barbara Gaines

GERRY JAECK
Ms. Carol Cleave

JANET JENTES
Caroline P. Cracraft

JACK KARP
*Mr. and Mrs. Norman Gold
 George and Roberta Mann
 Theodore and
 Harriette Perlman*

DODIE KOHL
Susan Salay

KATHLEEN AND
 JOSEPH MADDEN
*The Madden Family Fund at
 The Chicago Community
 Foundation*

ABBY S. MAGDOVITZ-
 WASSERMAN
David Wasserman, M.D.

ROBBIE MALICKI
COL Gregg Malicki

HOWARD MARDELL
Anonymous

SUSAN WALSH MILLER &
 MARCIA E. MILLER
Loren R. Miller III

CHARLES FRANCIS MOLES
Kathy Harrington

CHERYL MURRAY
Karen B. Shank and Toby Lange

ROBERT F. NICHOLSON
David Liechty

BETTY FAE NUSINOW
Mr. Bernard Nusinow

DR. JAMES L. RAPPORT
Adele Rapport

JIM REILLY
*Patti Eylar and Charlie Gardner
 Jack Johnson
 Carla Parch
 Don Welsh*

NEALE REINITZ
Ilene Reinitz

BERNARD "BERNIE" SAHLINS
Jan Kallish

ROCCO V. SPALLONE
Marissa Spallone

DEBORAH SOBOL
Rowland Chang

DAVID SZABO
Gerald and Mary Stapleton

STACEY ZICCARDI
Jon Leonard

MICHAEL ZUBER
Debra J. Randall

HONORARY GIFTS

DOTTIE BRIS-BOIS
*Stephanie and Michael Chu
 Kimberly Philo*

ALLY BULLEY III
Liam and Karen Krehbiel

ANN AND DICK DICKERSON
Amina Dickerson

PHIL AND LA ENGEL
Diana F. Blitzer

GILLIAN FLYNN
Scott and Katie Sigelbrown

BARBARA GAINES
*Carole and Peter Doris
 Margaret and John Fish
 Linda D. and Craig C. Grannon
 Deborah Horwitz
 Leland Hutchinson and
 Jean Perkins
 Daniel and Gloria Kearney
 Barbara Molotsky
 Mr. and Mrs. Norman A. Robins
 Kevin Waco
 Anonymous*

ETHEL AND WILLIAM GOFEN'S
 60TH WEDDING ANNIVERSARY
Jill and Geoffrey Parker

MARILYN HALPERIN
La and Philip Engel

ALEX HARE
Jeffrey Hare

CRISS HENDERSON
Faye Marlowe

RICK BOYNTON
Alan Gordon

BETSY KARP
*Judy Friedman
 Theodore and
 Harriette Perlman*

Honorary Gifts (continued)

FOR LIVE THEATER AT CST
Erik Lindstrom and
Laura Budde

AIDEN MCBREEN
Michelle McBreen

AMANDA OWENS
Kimberly Ormsby Nagy

TOM AND WENDY REIMAN
Phyllis Rosenberg

SHELI Z. ROSENBERG
Jack and Goldie Wolfe Miller
Ben and Nancy Randall

CAROLE SEGAL
Adams Family
Susan and Stephen Baird
Mr. and Mrs. Abram Bluestein
Crown Family Philanthropies
Cate and Jim Denny
Janet and Craig Duchossois
Joan Hall
The Family of Jack Karp

The Andrew and Joan McKenna
Foundation
Julian Oettinger
Mark and Nancy Ratner
Patrick G. and Shirley W. Ryan
Foundation
Susan and Bob Wislow
Cate and Frederick Waddell

HARVEY AND
MARY STRUTHERS
George and Susan Heisler
CARL AND MARILYNN THOMA
Joan Golder

In-kind Support

Contributed materials and services are an essential component in sustaining Chicago Shakespeare's role as a gathering place for audiences, artists, and members of the community. We thank the following individuals and organizations for their valuable donations of goods and services.

Reflects contributions received between July 1, 2021–August 1, 2022

Aloft Chicago Mag Mile

Regina Buccola, PhD

Embassy Suites Chicago Downtown
Magnificent Mile and Double Tree
Magnificent Mile

Food For Thought

Kimberly Hedlin, PhD

Richard Hein

HMS Media, Inc.

KPMG Family for Literacy

Offshore

Van Duzer Vineyards—
Carl and Marilynn Thoma

WTTW, WFMT



Members of the First Folio Society have generously included Chicago Shakespeare Theater in their estate plans. Chicago Shakespeare honors their thoughtful commitment to our future.

Mary and Nick Babson

John W. Barriger

Joan Israel Berger

Marilyn Darnall

Kathy Dunn

La and Philip Engel

Michael Goldberger

Linda D. and Craig C. Grannon

Barbara Joabson

Dr. Anne McCreary Juhasz

Judy and John Keller

Mr. and Mrs. Martin J. Koldyke

Anstiss Hammond Krueck

Anne E. Kutak

Ray and Judy McCaskey

Jonathan F. Orser

Mark Ouweleen and Sarah Harding

Sheila Penrose and Ernie Mahaffey

Barbara Petersen

Chuck Simanek and Edna Burke

Craig Sirls

Michael and Sharon Sloan

Steve and Robin Solomon

David and Ingrid Stallé

Sandra Sweet and Mira Frohnmayer

Susan Tennant

Helen and Richard Thomas

Gayle and Glenn R. Tilles

Linda Vertrees

Frank T. Wheby

Stuart and Diana Widman

Anonymous (3)

Chicago Shakespeare gratefully acknowledges the following estates that have provided gifts of bequests.

Evelyn D. Barriger

George W. Blossom III

Carol Irma Chapman

Nancy Cleary

Nelson D. Cornelius

S.M. Evans

J. Friedman

Edith B. Gaines

Anne J. Hackett Estate

Julie and Parker Hall

Dick Hurckes

Corinne E. Johnson

Sherry Ferrill Kelley 1996 Trust

William Lawrence

Kathleen and Joseph Madden

Estate of Joyce E. Malden

Peggy Morrow

Harold H. Plaut

Carol Verblen Senderowitz

Rose L. Shure and Sidney N. Shure

The Notebook

A NEW MUSICAL

Be a part
of the story

Follow @NotebookMusical
for a behind-the-scenes look at
the world premiere musical.



notebookmusical.com